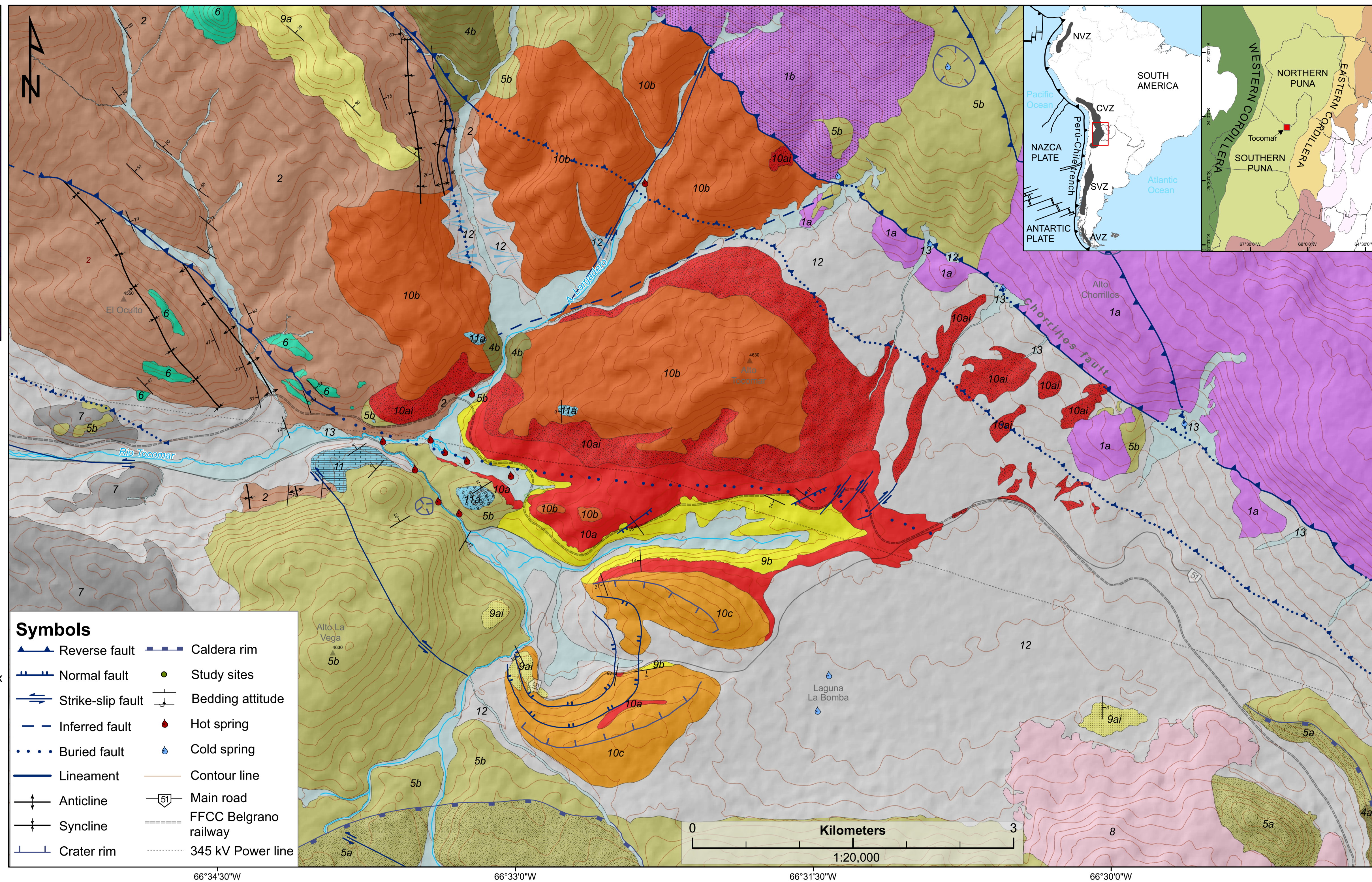
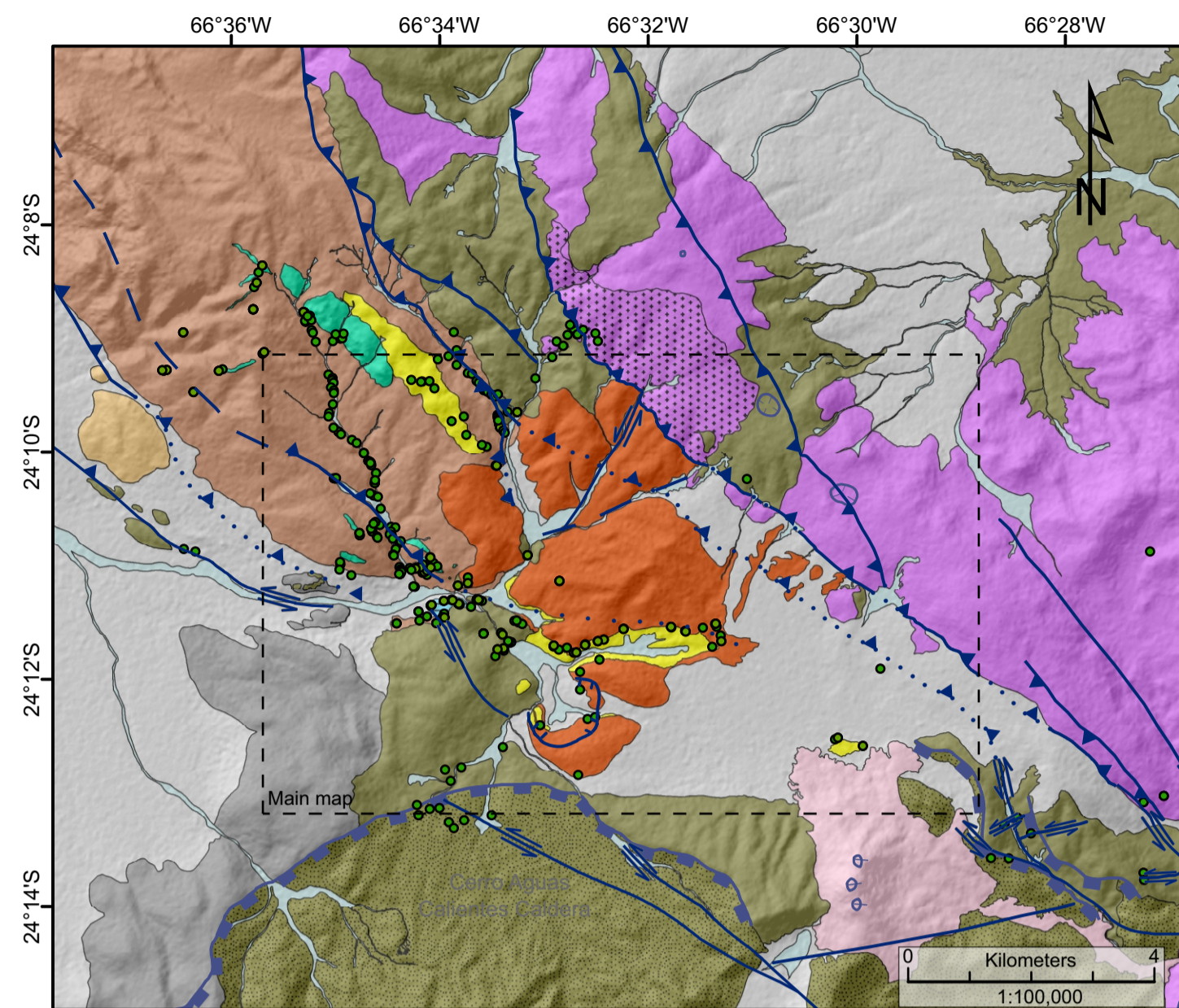


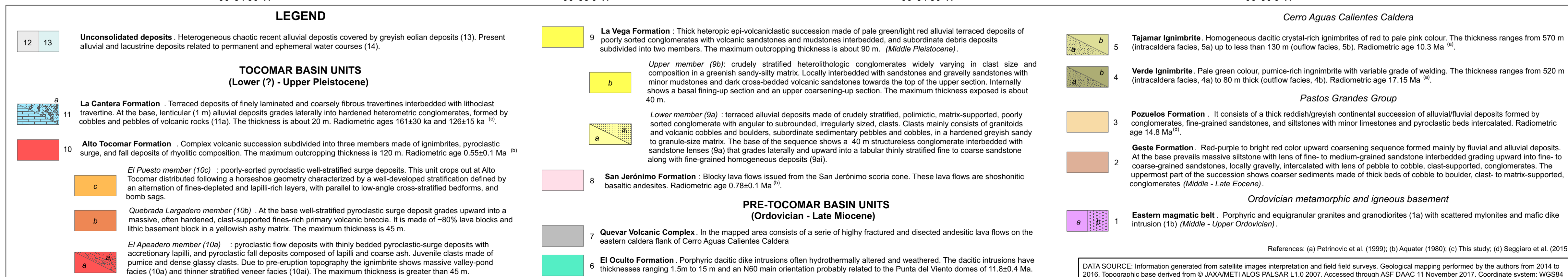
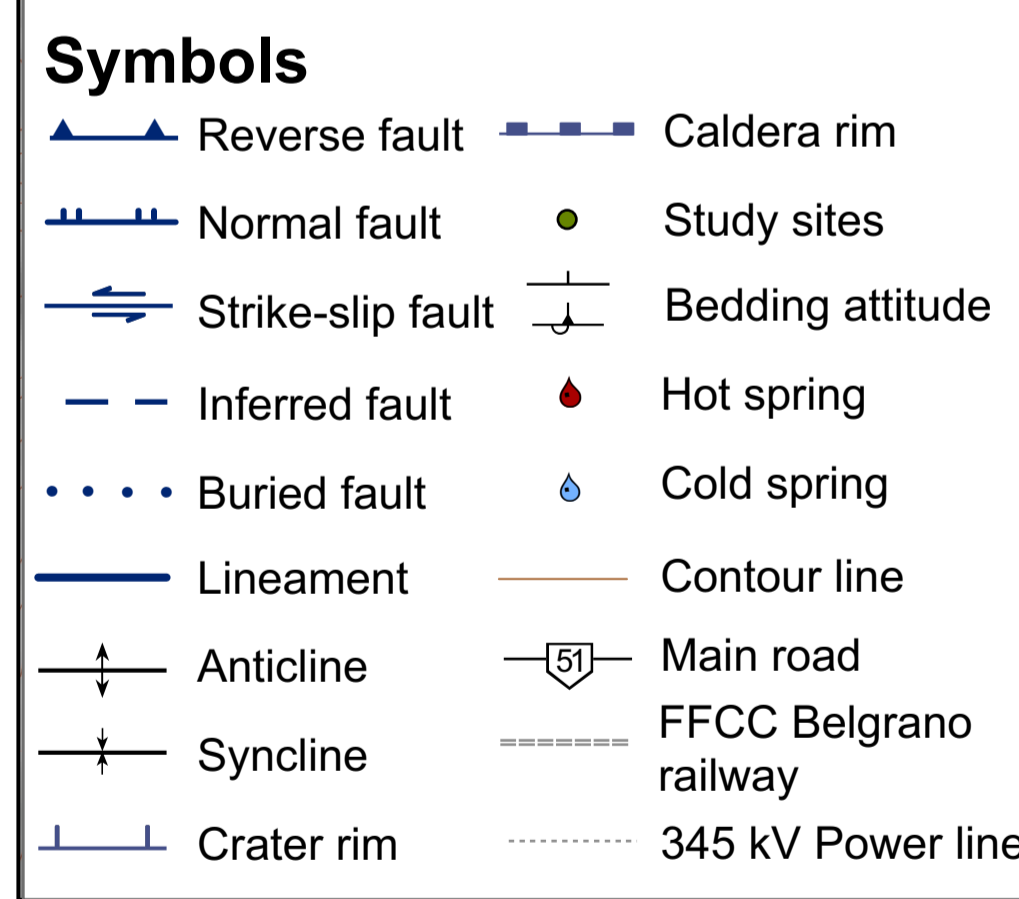
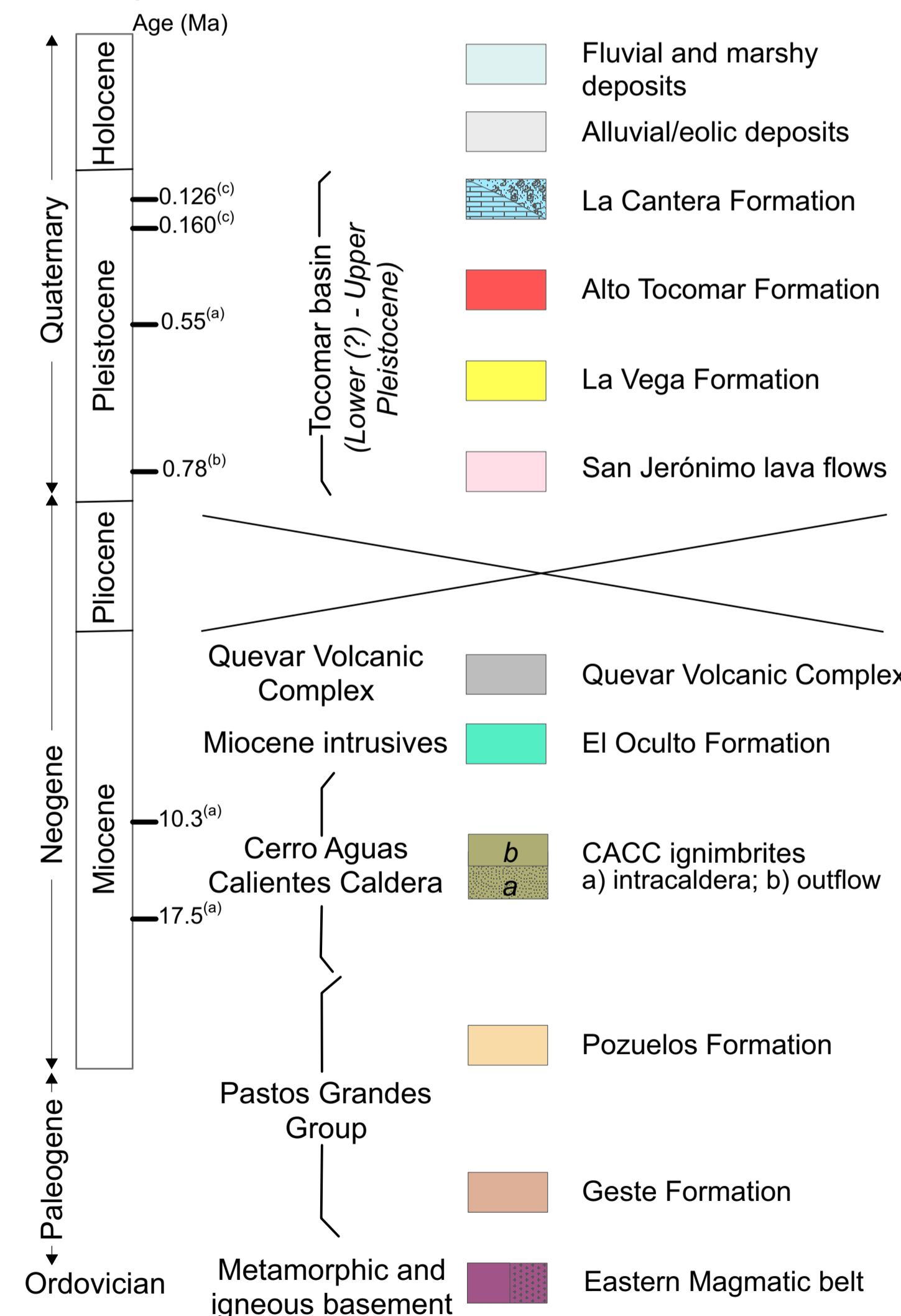
GEOLOGY OF THE TOCOMAR BASIN (PUNA PLATEAU, ARGENTINA)

Filipovich R.¹, Báez W.¹, Groppelli G.², Ahumada F.¹, Aldega L.³, Becchio R.¹, Berardi G.⁴, Bigi S.³, Caricchi C.⁵, Chiodi A.¹, Corrado S.⁴, De Astis G.⁵, De Benedetti A.A.⁴, Invernizzi C.⁶, Norini G.², Soligo M.⁴, Taviani S.⁷, Viramonte J.¹ and Giordano G.^{2,4}

¹Instituto de Bio y Geociencias del NOA (CONICET-UNSa), Av. Bolivia 5150, A4400FVY Salta, Argentina
²CNR Istituto di Geologia Ambientale e Geoingegneria, sezione di Milano, Via Mario Bianco 9, 20131 Milan, Italy
³Università La Sapienza, Piazzale Aldo Moro, 5, 00185 Rome, Italy
⁴Università degli Studi di Roma Tre, Largo S. L. Murialdo 1, 00146 Rome, Italy
⁵Istituto Nazionale di Geofisica e Vulcanologia, 00143 Rome, Italy
⁶Università di Camerino, Piazza Cavour 19f, 62032 Camerino (MC), Italy
⁷Department of Earth and Environmental Sciences, University of Milano-Bicocca, Milan.



Stratigraphic scheme



Countour interval 50 m
 Project coordinators: Giordano G., Viramonte J.G.
 Field survey coordinators: Báez W., Groppelli G.
 Geological survey: Filipovich R., Báez W., Becchio R., Ahumada F., Viramonte J.G., Aldega L., De Astis G., De Benedetti, Groppelli G., Giordano G.
 Structural survey: Bigi S., Caricchi C., Corrado S., Filipovich R., Invernizzi C., Norini G.,
 Hydrogeology and Geochemistry of fluids: Chiodi A., Tassi F., Taviani S.
 U/Th age determinations: Berardi G., Soligo M.
 Editing and digital cartography: Filipovich R.
 This work has been funded by the Italian Ministry of Foreign Affairs Progetto AR00197 di Grande Rilevanza "Sviluppo sostenibile dei sistemi geologici associati ai sistemi vulcanici della Puna nella Provincia di Salta a July (2014-2016)", directed by Giordano G. and Viramonte J. G. and by PIO No. 3320140100015CO "Caratterizzazione del Sistema Geotermale Tocomar y evaluación de su potencial como recurso energético no convencional sustentable para la Puna Argentina (2015-2017)", financed by CONICET and YPF S.A., Y-TEC

References: (a) Petrinovic et al. (1999); (b) Aquater (1980); (c) This study; (d) Seggiano et al. (2015)
 DATA SOURCE: Information generated from satellite images interpretation and field field surveys. Geological mapping performed by the authors from 2014 to 2016. Topographic base derived from © JAXA/METI ALOS PALSAR L1.0.2007. Accessed through ASF DAAC 11 November 2017. Coordinate system: WGS84