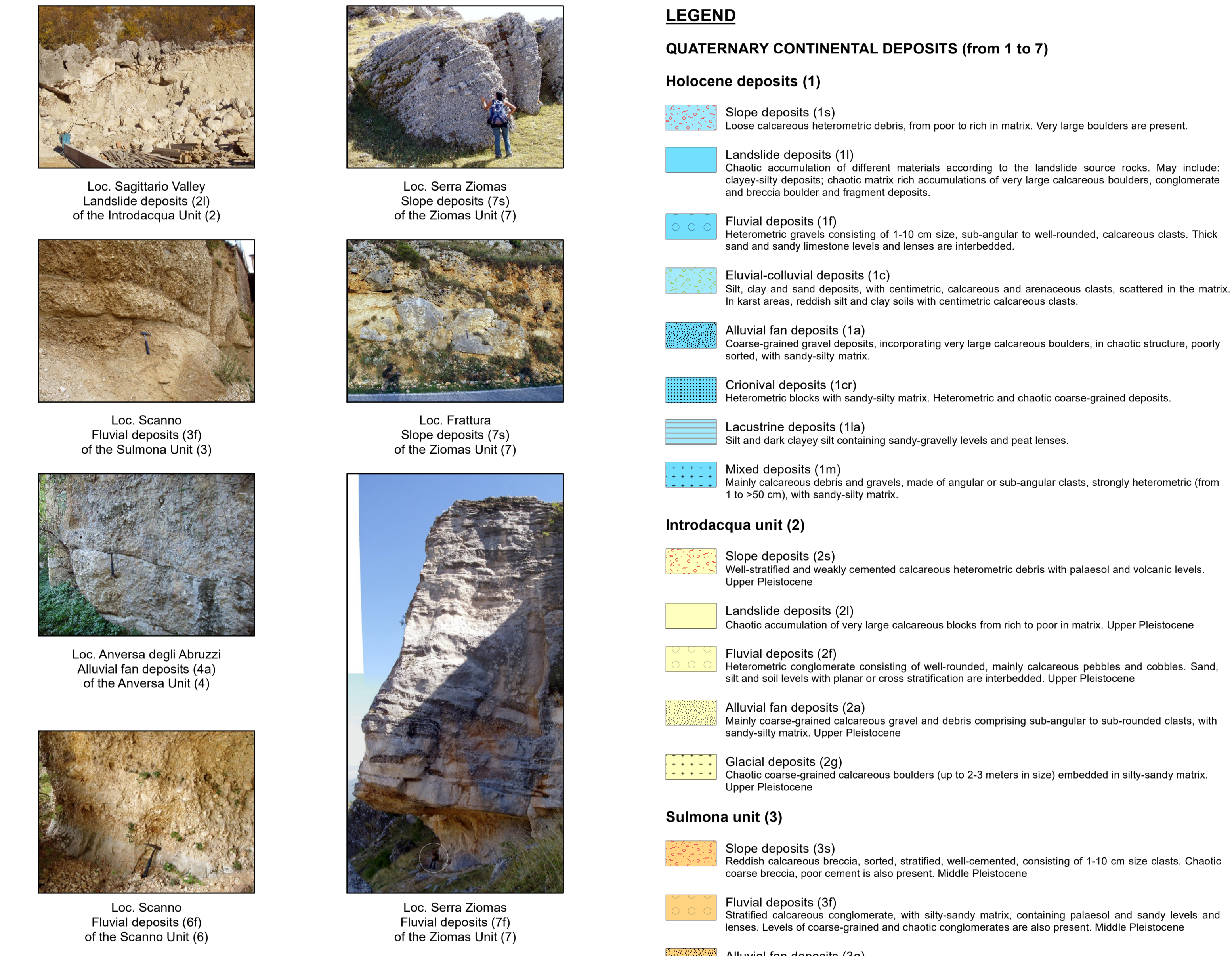
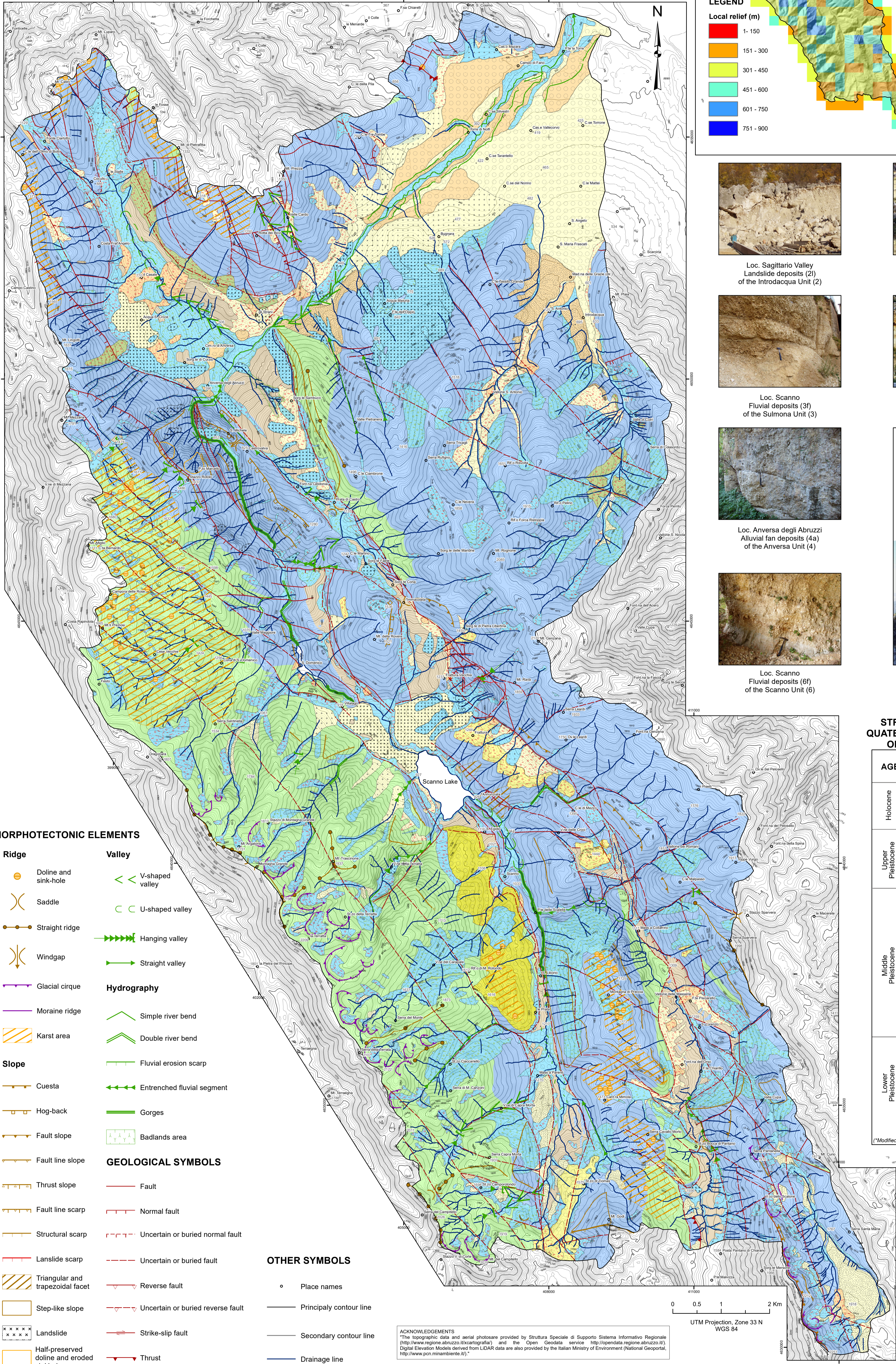
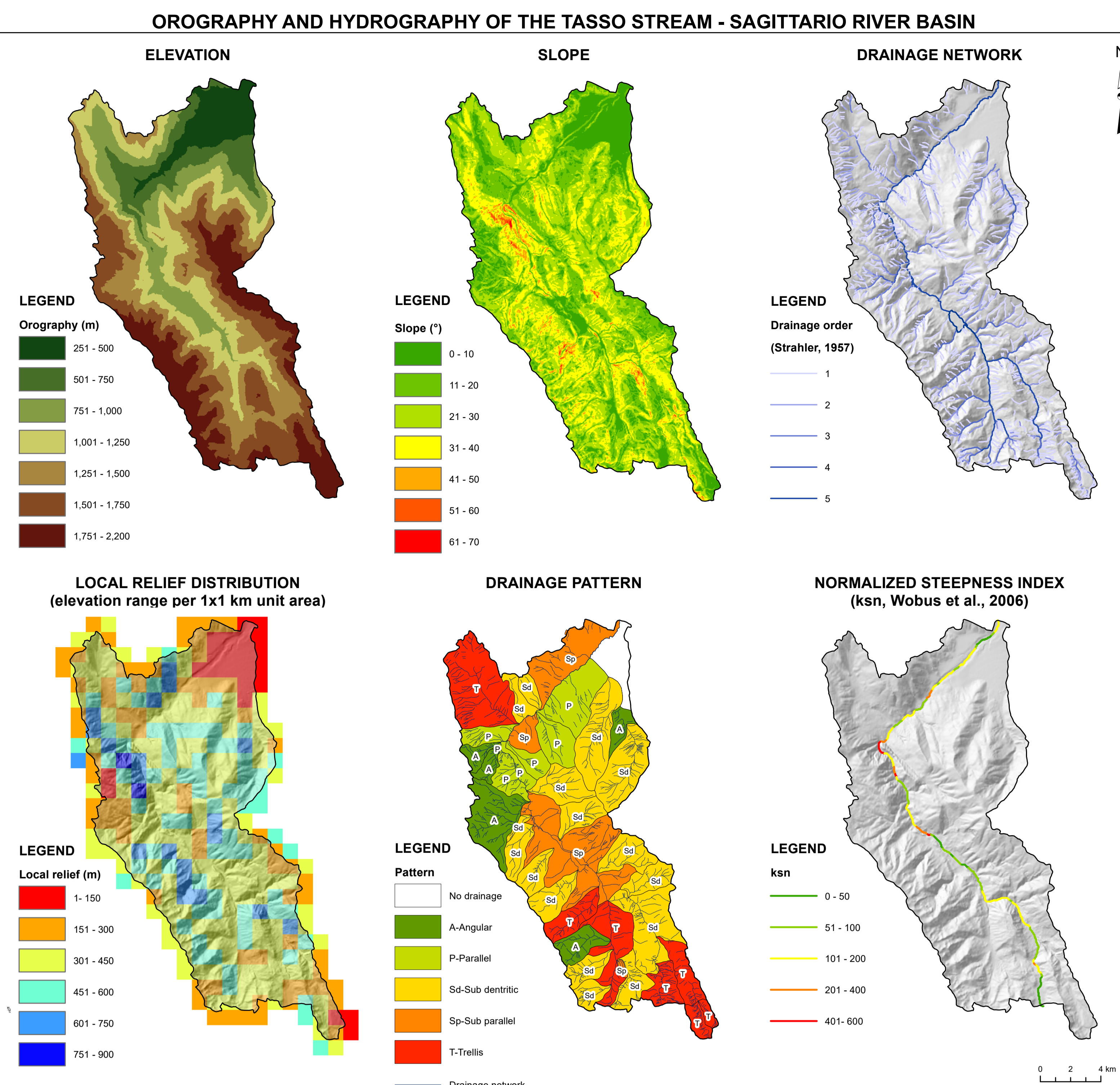
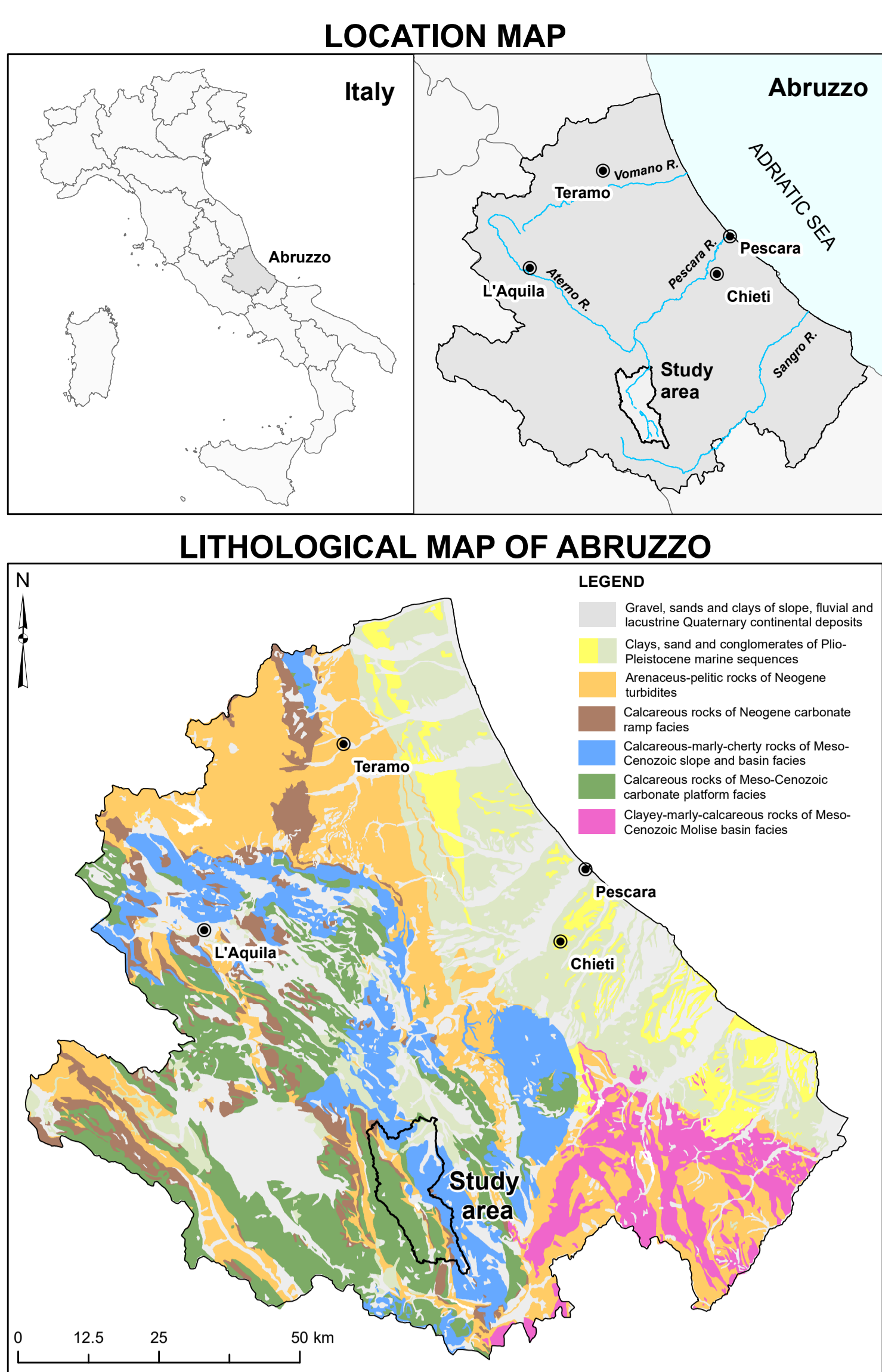


# MORPHOTECTONICS OF THE TASSO STREAM – SAGITTARIO RIVER VALLEY (CENTRAL APENNINES, ITALY), SCALE 1:35,000

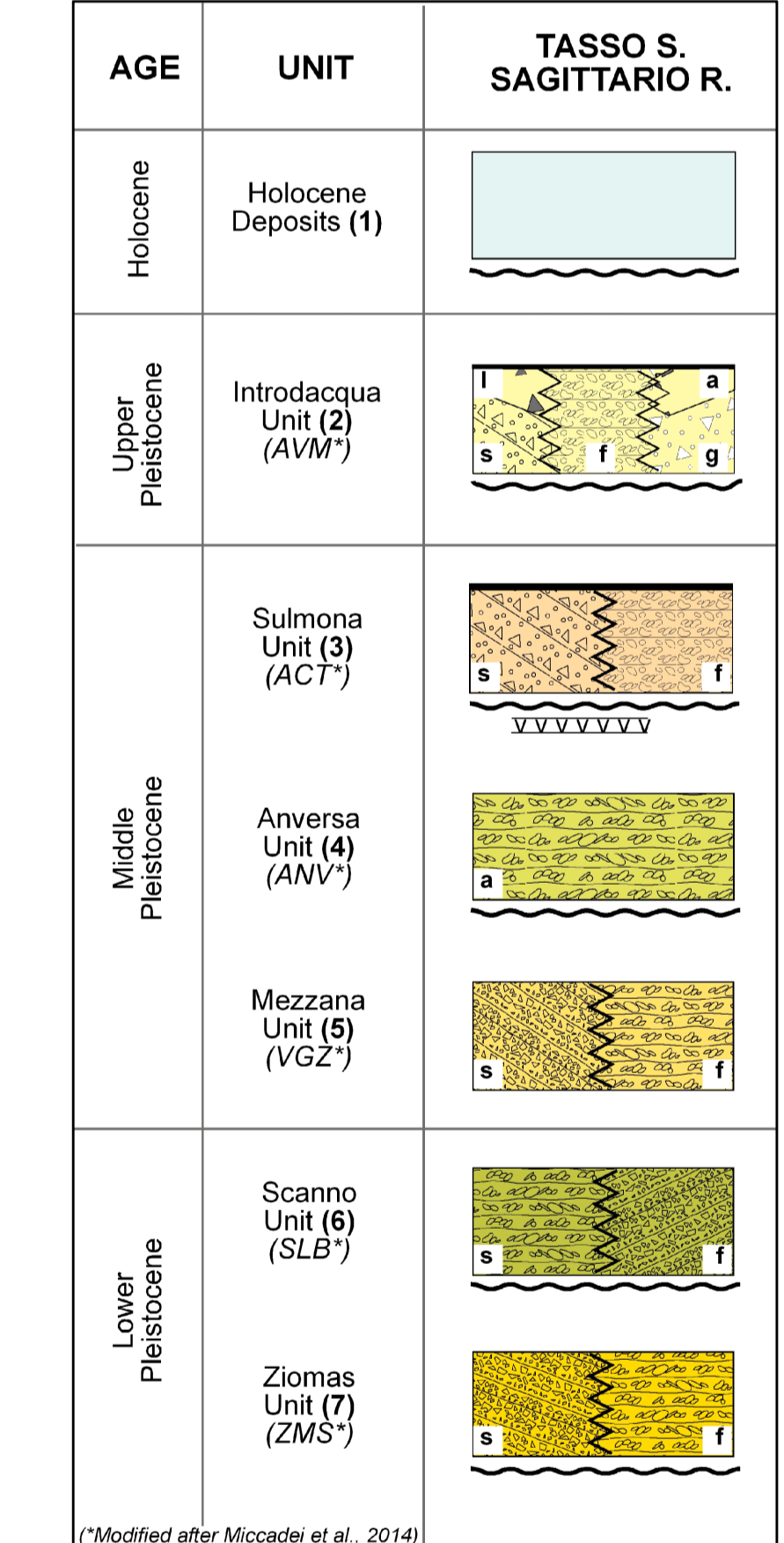
Enrico Miccadei<sup>1,2</sup>, Claudio Bertì<sup>3</sup>, Monia Calista<sup>1</sup>, Gianluca Esposito<sup>1</sup>, Vania Mancinelli<sup>1</sup>, Tommaso Piacentini<sup>1,2\*</sup>

<sup>1</sup>Università degli Studi "G. d'Annunzio" Chieti-Pescara, Department of Engineering and Geology, Laboratorio di Tectonica Geomorfologica e GIS, Italy  
<sup>2</sup>Istituto Nazionale di Geofisica e Vulcanologia, Sezione Roma 1, Rome, Italy  
<sup>3</sup>Leigh University, Department of Earth and Environmental Sciences, Bethlehem, USA  
\*Corresponding author: [tpiacentini@unich.it](mailto:tpiacentini@unich.it)

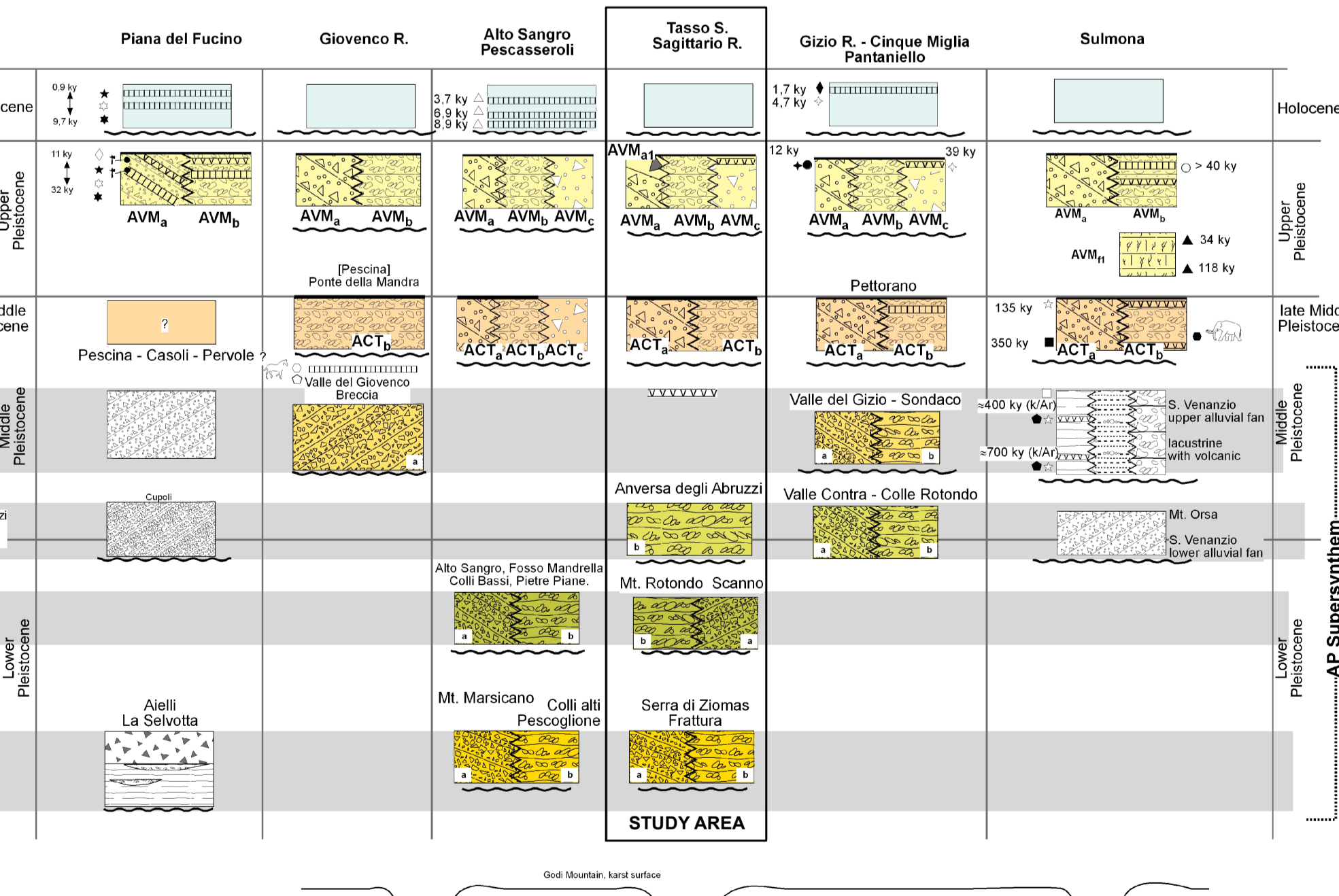
© Journal of Maps, 2018



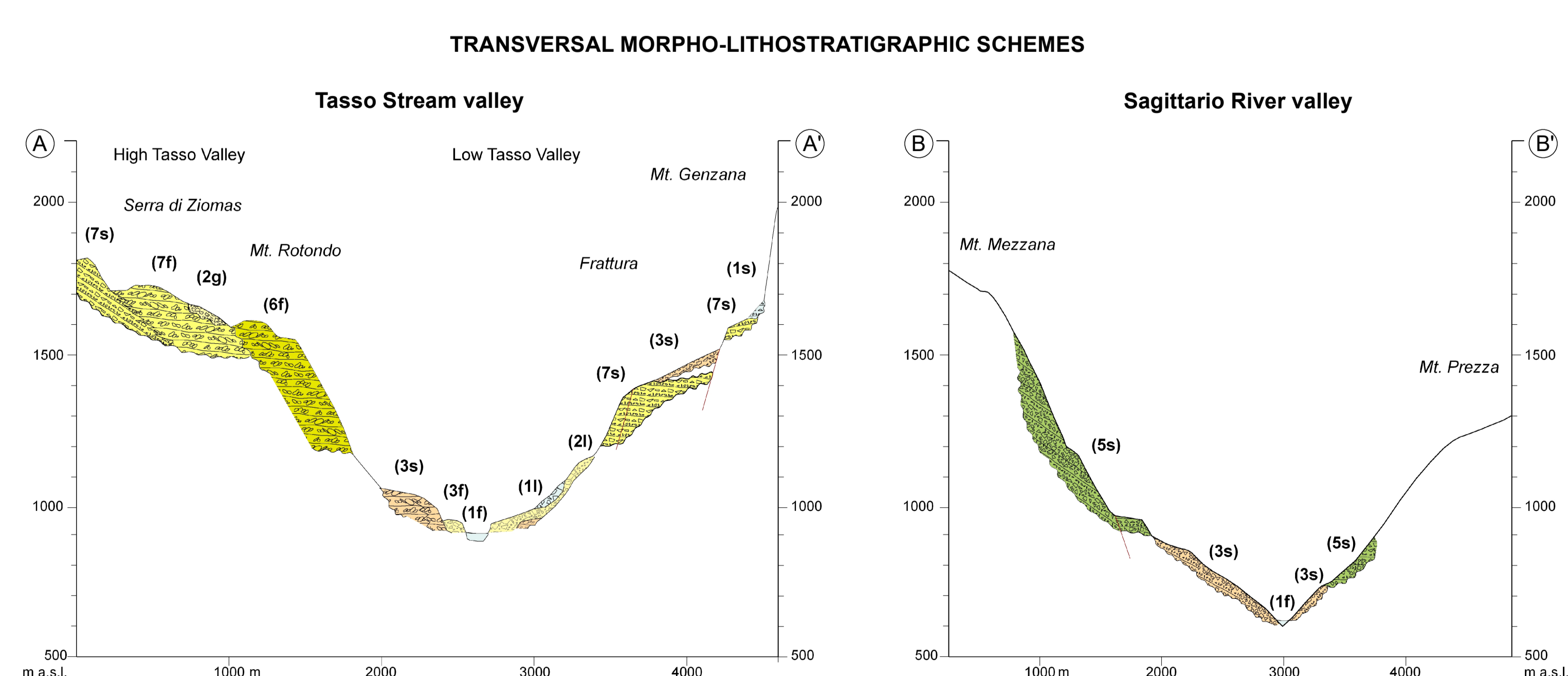
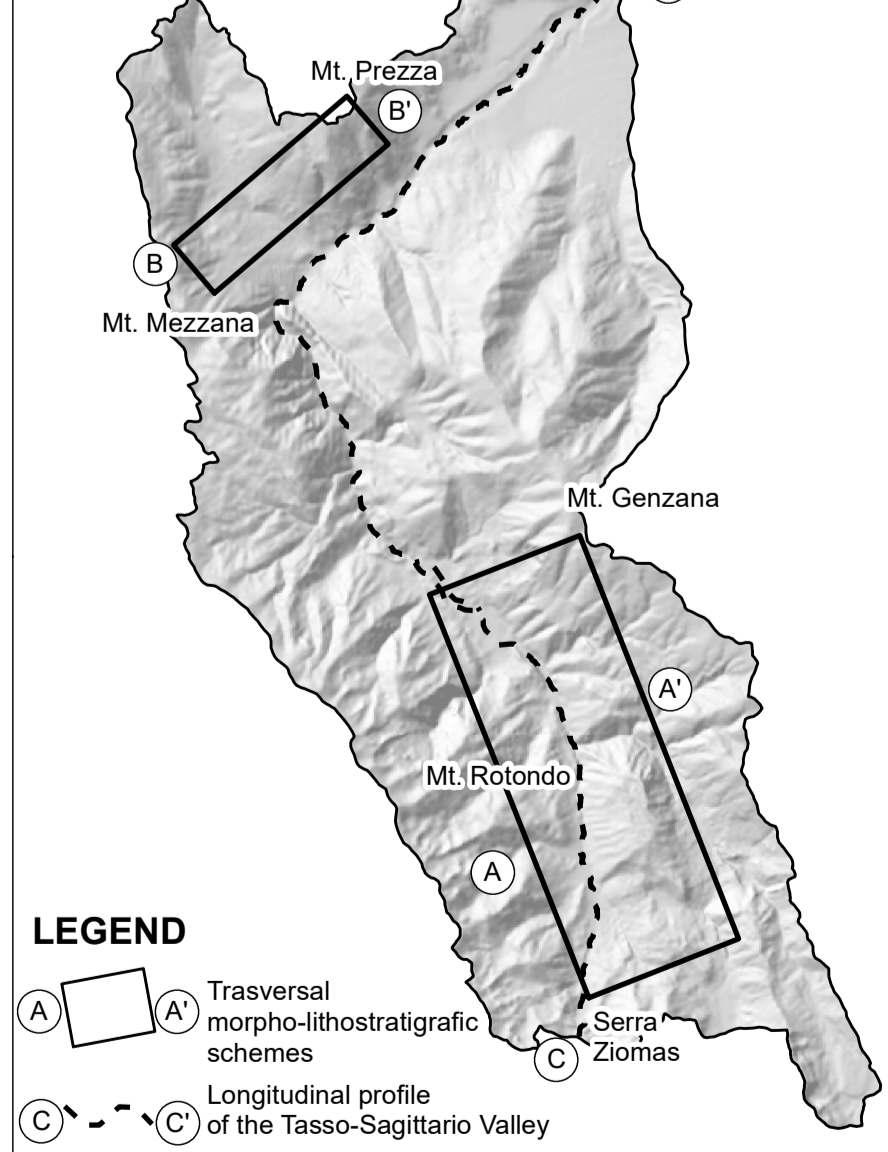
## STRATIGRAPHIC SCHEME OF THE QUATERNARY CONTINENTAL DEPOSITS OF TASSO-SAGITTARIO VALLEY



## CHRONOSTRATIGRAPHIC SCHEME OF QUATERNARY CONTINENTAL DEPOSITS (of the area from the Fucino basin to the Sulmona basin, modified after Miccadei et al., 2014)



## LOCATION OF SCHEMES AND PROFILE



## LONGITUDINAL PROFILE OF THE TASSO STREAM AND SAGITTARIO RIVER VALLEY

