

# Surface Ruptures Following The 26 December 2018, Mw 4.9, Mt. Etna Earthquake, Sicily (Italy)

EMERGEO Working Group (Etna 2018) - Riccardo Civico<sup>1</sup>, Stefano Pucci<sup>1</sup>, Rosa Nappi<sup>1</sup>, Raffaele Azzaro<sup>1</sup>, Fabio Villani<sup>1</sup>, Daniela Pantosti<sup>1</sup>, Francesca Romana Cinti<sup>1</sup>, Luca Pizzimenti<sup>1</sup>, Stefano Branca<sup>1</sup>, Carlo Alberto Brunori<sup>1</sup>, Marco Caciagli<sup>1</sup>, Massimo Cantarero<sup>1</sup>, Luigi Cucci<sup>1</sup>, Salvatore D'Amico<sup>1</sup>, Emanuela De Beni<sup>1</sup>, Paolo Marco De Martini<sup>1</sup>, Maria Teresa Mariucci<sup>1</sup>, Paola Montone<sup>1</sup>, Rosella Nave<sup>1</sup>, Tullio Ricci<sup>1</sup>, Vincenzo Sapia<sup>1</sup>, Alessandra Smedile<sup>1</sup>, Gabriele Tarabusi<sup>1</sup>, Roberto Vallone<sup>1</sup>, Alessandra Venuti<sup>1</sup>

<sup>1</sup>Istituto Nazionale di Geofisica e Vulcanologia, Italy. - \*Corresponding author: riccardo.civico@ingv.it

# EMERGEO

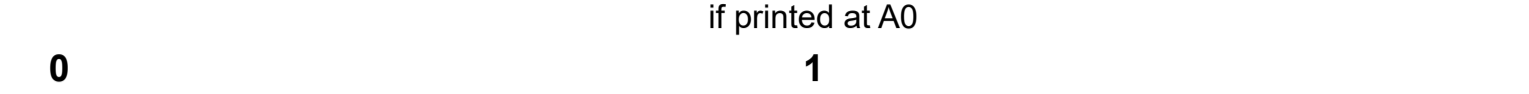
ISTITUTO NAZIONALE DI GEOFISICA E VULCANOLOGIA

© Journal of Maps, 2019

N

1:10.000

if printed at A0

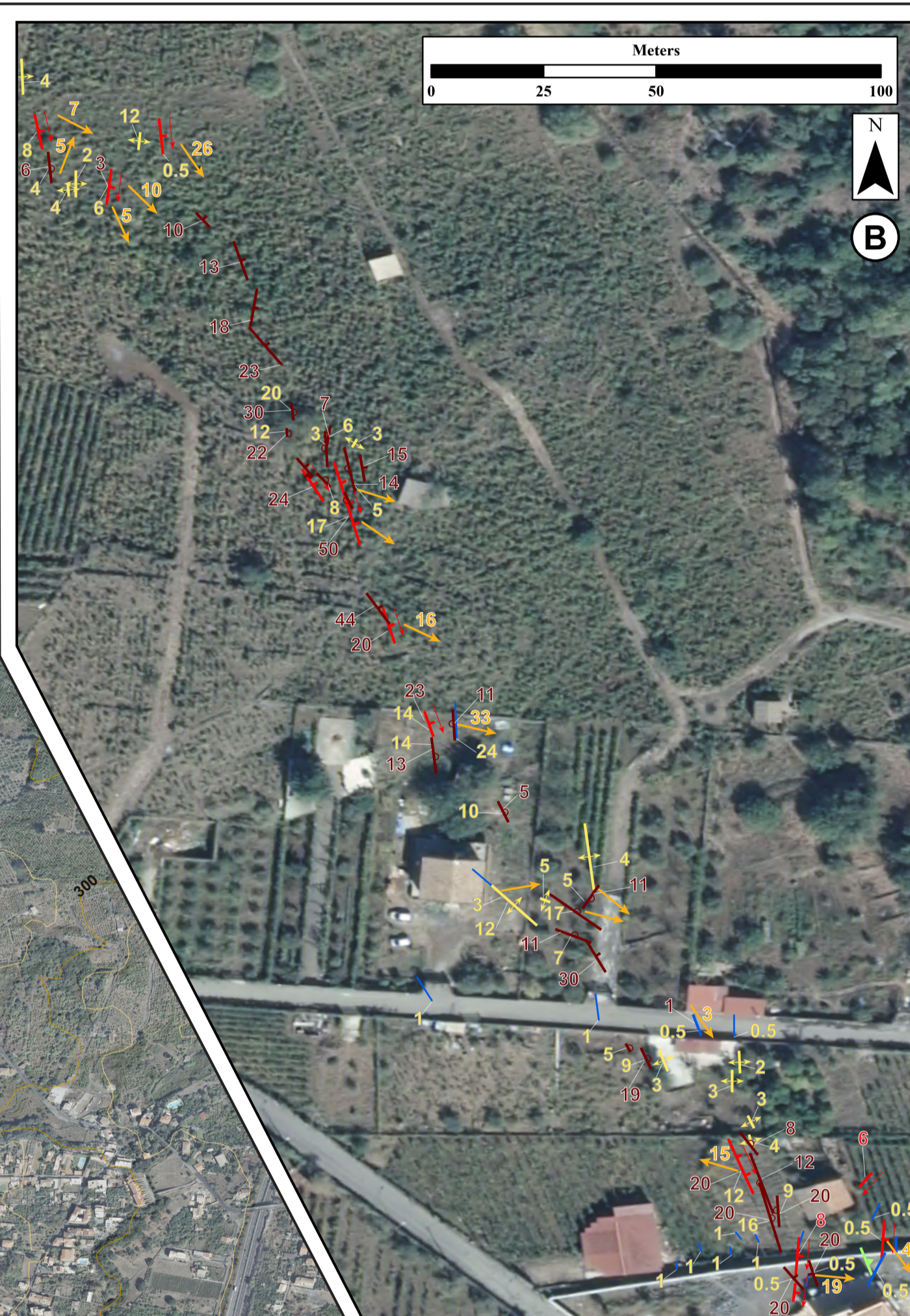
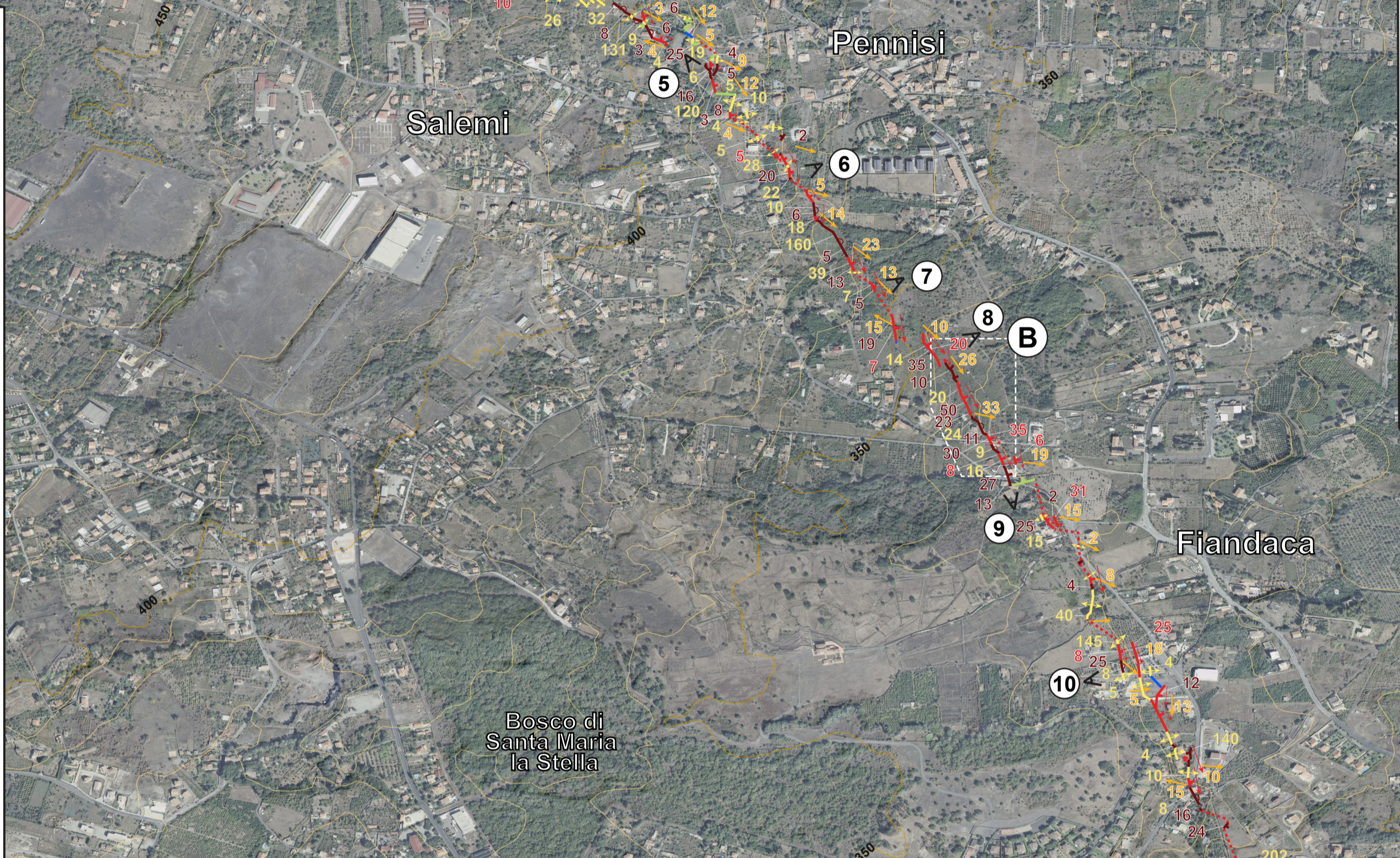
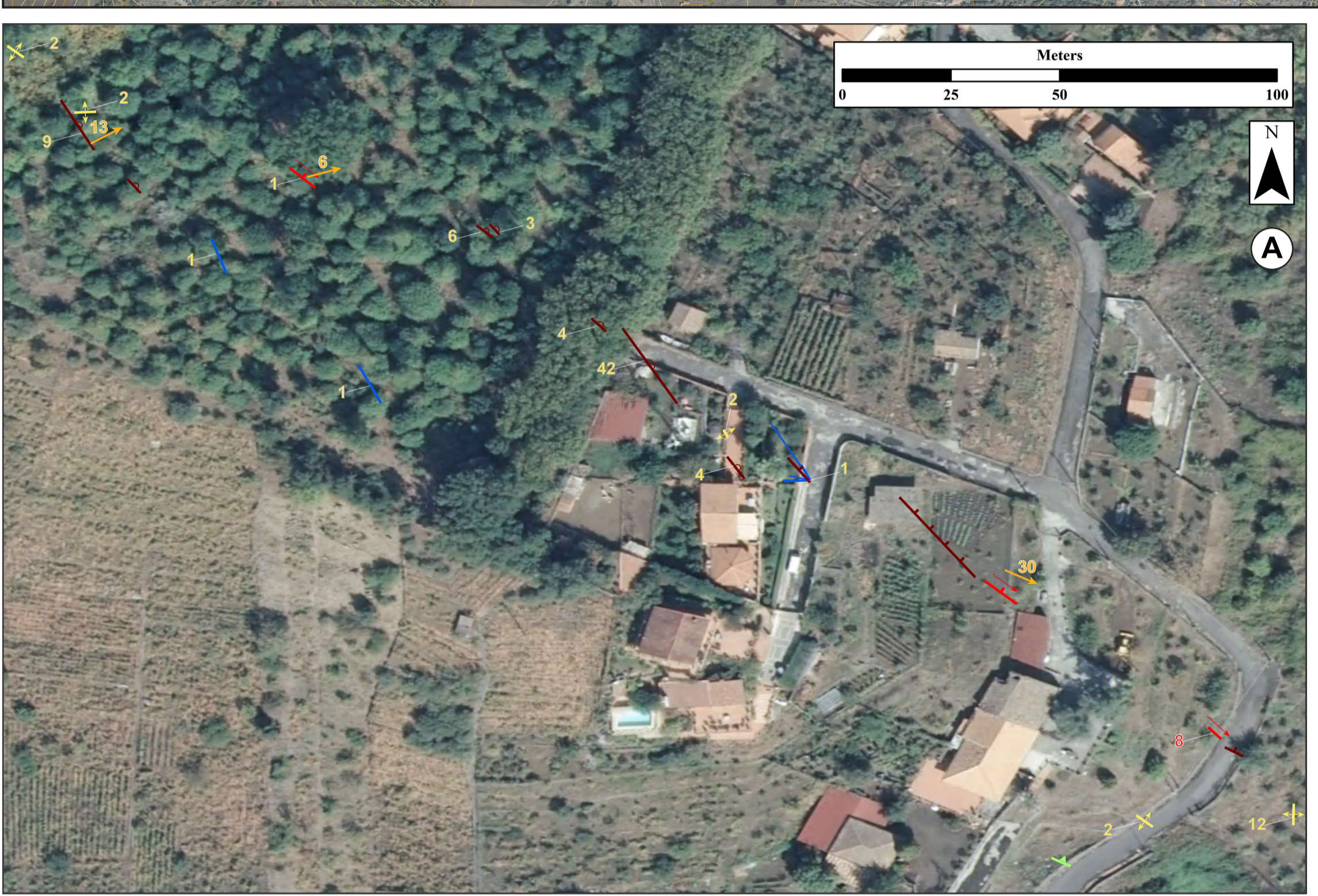
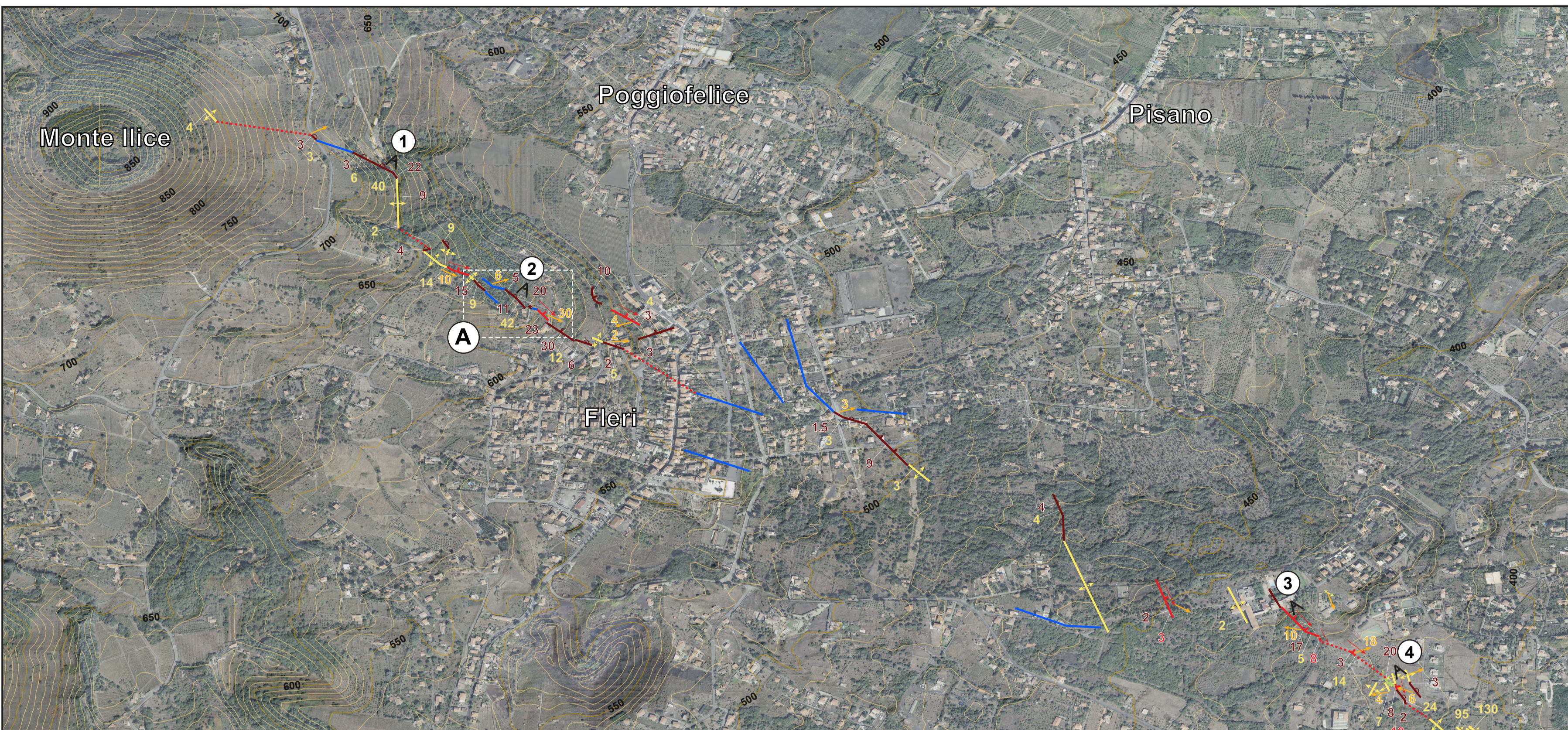


Kilometers  
Coordinate System: GCS WGS84 (EPSG 4326)  
Datum: WGS84

Basemaps: 1) Orthophoto AFA 2013-2015 from Regione Sicilia; 2) Contour lines (10-m interval) and spot-heights from vertical topographic maps at 1:10,000 scale (C.T.R. from Regione Sicilia); 3) Hillshaded relief from the 2-m grid digital elevation model (available from Ministry of the Environment and for Protection of the Land and Sea: <http://www.pcn.miamambiente.it/>); Inset basemaps: Orthophoto AFA 2013-2015 from Regione Sicilia.

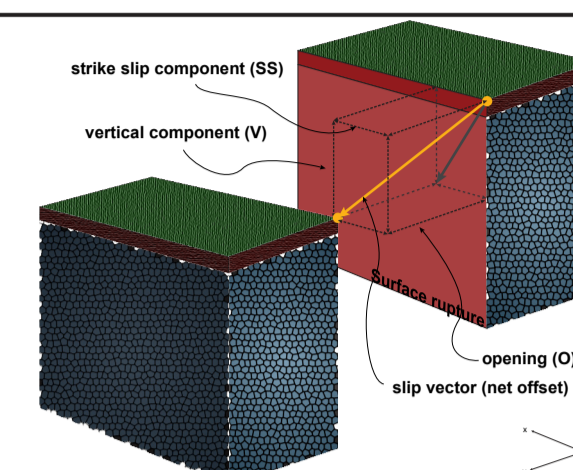


Location map



### Surface rupture trace kinematics

- Normal ( $O < 1$  cm;  $V > 1$  cm;  $SS < 1$  cm or n.a.)
- Hybrid ( $O > 1$  cm;  $V > 1$  cm;  $SS < 1$  cm or n.a.)
- Tensional ( $O > 1$  cm;  $V < 1$  cm;  $SS < 1$  cm or n.a.)
- Transtensive ( $O \geq 1$  cm;  $V > 1$  cm;  $SS > 1$  cm)
- Strike slip ( $O < 1$  cm;  $V < 1$  cm;  $SS > 1$  cm)
- Transpressive ( $O < 1$  cm;  $V > 1$  cm;  $SS > 1$  cm)
- Reverse ( $O < 1$  cm;  $V > 1$  cm;  $SS < 1$  cm or n.a.)
- Minor cracks ( $O < 1$  cm;  $V < 1$  cm;  $SS < 1$  cm or n.a.)
- Buried or uncertain
- Slip vector



### Offset (cm)

- 35 Vertical (perpendicular to the rupture strike)
- 35 Opening (perpendicular to the rupture strike)
- 35 Strike slip (parallel to the rupture strike)
- Net (along the slip vector)

③ Picture number    Camera point of view

