


Rosetta, a tool for linking accelerometric recordings and macroseismic observations: description and applications

Mario Locati¹  · Augusto Antonio Gomez Capera¹ ·
Rodolfo Puglia¹ · Marco Santulin¹

Received: 13 January 2016 / Accepted: 4 June 2016
© Springer Science+Business Media Dordrecht 2016

Abstract Investigating relationships between macroseismic intensity and strong-motion data requires the existence of these two records for the same seismic event and site. In Italy, this comparison is feasible through the cross-matching of the Italian Macroseismic Database (DBMI) and the Italian Strong-Motion Database (ITACA) which are the most comprehensive sources of both data. However, the two databases lack a direct link which would allow performing joint analysis of macroseismic data points and strong-motion recordings, making the comparison a time consuming job for the researcher. This paper demonstrates the usefulness of cross-database identifiers, and presents their use in a web-tool called Rosetta, an initial proof-of-concept that helped testing linking procedures among DBMI and ITACA, and user friendly visual solutions. The development allowed the working group to exchange expertise on their respective database structures and workflows, laying the groundwork for a consistent, low-maintenance, and durable solution that will be easily updatable each time a new version of DBMI or ITACA will be released.

Keywords Macroseismic intensity · Strong-motion · Database · Italy

1 Introduction

Establishing the relationships between observable effects of an earthquake and the instrumentally recorded data is a difficult task, especially because the macroseismic data are the combined results of strong motion effects, building vulnerability, site amplification,

Electronic supplementary material The online version of this article (doi:10.1007/s10518-016-9955-y) contains supplementary material, which is available to authorized users.

✉ Mario Locati
mario.locati@ingv.it

¹ Istituto Nazionale di Geofisica e Vulcanologia, Milan, Italy

and other factors (Caprio et al. 2015; Faenza and Michelini 2011; Cua et al. 2010; Allen and Wald 2009). In turn, strong-motion recordings can be affected by several features, such as the quality of the recording instrument and of its installation, the proximity to civil structures, and site amplification phenomena. Therefore, while calibrating these relationships, a large quantity and high quality of both macroseismic and strong-motion recordings has to be considered.

This paper demonstrates the usefulness of bridging the macroseismic and the accelerometric databases run at the Istituto Nazionale di Geofisica e Vulcanologia (INGV) in coordination with the Italian Department of Civil Protection (DPC) by including external identifiers right into their database schema. A web-tool called Rosetta (a name reminding the stele with a decree written in ancient Egyptian hieroglyphs, Demotic, and ancient Greek) was setup as an experimental proof-of-concept to test linking procedures and user friendly solutions among the considered databases and their heterogeneous data types. Finally, Rosetta was tested by non-IT experts to derive a preliminary relationship between Peak Ground Acceleration (PGA) and macroseismic intensity expressed in MCS scale (Mercalli-Cancani-Sieberg; Sieberg 1930).

2 Data

Italy has a very long tradition in collecting, handling and producing seismological data (Camassi 2004), both in terms of earthquakes effects documented by observers, and instrumentally recorded data. With the advent of the Internet and the Web, the process of retrieving data became a trivial task, especially for digitally native data. As the data available on the Web experienced an exponential growth, it is important to be able of identifying which data sources can be considered trustworthy.

Currently, macroseismic data are made available by the Italian Macroseismic Database (DBMI), which is updated on a multiannual base, and makes available intensity data related to earthquakes contained in the parametric earthquake catalog of Italy (CPTI). On the other hand, accelerometric data are made available by the Italian Accelerometric Archive (ITACA), which is an all-in-one solution for accessing strong-motion recordings, accelerometric stations information, and the related list of earthquakes. The version 2011 of DBMI and CPTI covers a time-window 1000–2006, whereas the version 2 of ITACA reports events from 1972 to 2014. The present study considers the overlapping period, from 1972 to 2006.

2.1 The database of the Italian macroseismic observations, DBMI

Earthquake effects are classified through macroseismic observations that can be determined without the use of instruments (Musson and Cekić 2012). Effects are expressed in terms of intensities, a classification (not a measure) of the strength of shaking at a place during an earthquake. An intensity classifications system is called “scale”, and since the first one introduced by Rossi-Forel in 1883, multiple scales have been developed (see Musson et al. 2009 for a comprehensive description). One of the most recent one is the EMS-98 scale (European Macroseismic Scale; Grünthal 1998), an evolution of the previous MSK scale (Medvedev-Sponheuer-Karník; Medvedev et al. 1964). Despite there have been multiple attempts to introduce the use of EMS-98 scale in Italy (e.g., Molin

2003; Molin et al. 2010; Tertulliani and Galli 2012), the most widely used scale in Italy remains the MCS scale.

A Macroseismic Data Point (MDP) is made of three components: (1) the date of the event, (2) a location, expressed in terms of geographical coordinates usually associated to a place name, and the (3) assessed intensity. Old macroseismic scales clearly define what an intensity is, but do not usually provide a precise and concise definition of what should be intended with the interchangeable terms location, place, or locality, as scales apparently are taking for granted that such terms cannot be misinterpreted. However, real life examples might result in a difficult definition on what a locality precisely is (e.g. Fig. 1).

As far as earthquakes occurred prior to the twentieth century are concerned, some European countries (e.g., France: Scotti et al. 2004; Switzerland: Fäh et al. 2011) have one source of macroseismic data only. Conversely, in Italy there are multiple sources of macroseismic intensity data, most of them available as published articles or internal reports written by a multitude of different authors from different institutions. Data sources considered by DBMI can be subdivided in three categories:

- Studies based on historical research, relying on the investigation of non-seismologically oriented written sources (Stucchi and Albinì 1991; Guidoboni and Stucchi 1993);
- Studies based on field surveys, conducted by teams of experts (Cecić and Musson 2004; Camassi et al. 2009);
- Macroseismic Bulletins, a periodic publication made by Istituto Nazionale di Geofisica between 1980 and 1999, and by Istituto Nazionale di Geofisica e Vulcanologia from 2000 up to 2005; it is based on a questionnaire sent out after earthquakes with magnitude 3 or larger, and filled by selected correspondents such as municipality representatives, military divisions, or civil corps, depending on the area (Gasparini et al. 1992; De Rubeis et al. 1992).

Users of macroseismic data are facing a very complicated situation due to the existence of multiple sources of data, sometimes related to the same earthquake, and sometimes

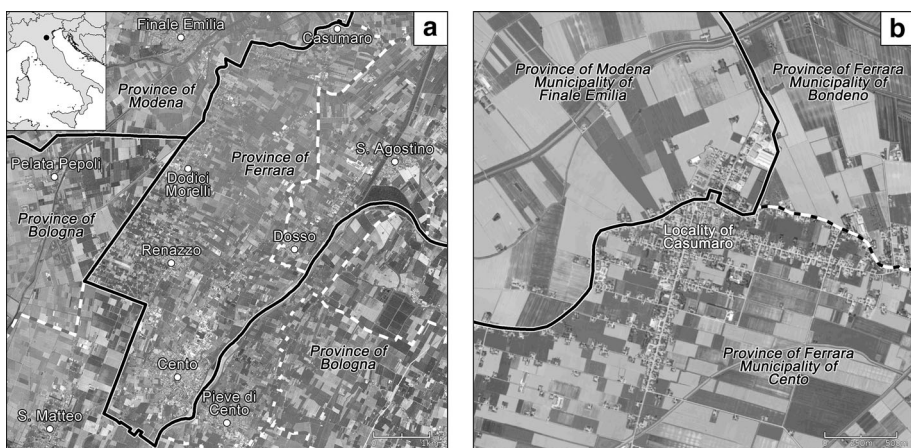


Fig. 1 Examples of the distributions of localities (*dots*) in a municipality (*dotted lines*), and provinces boundaries (*continuous lines*): **a** localities in the municipality of Cento and surroundings, **b** detail of the locality of Casumaro, which is administratively subdivided between two municipalities and two provinces, and considered one locality in DBMI for assessing a macroseismic intensity

providing conflicting interpretations. In addition, this complex scenario has to deal with an evolving knowledge, as new research is performed on historical earthquakes, and new publications may dramatically revise earthquake scenarios depicted by previous publications. As taking every possible publication into consideration is a necessary condition to compile a comprehensive and reliable national catalog of earthquakes, DBMI collects each published article, parses its text (or map) content in order to retrieve intensity data, establish relationships among different sources, and eventually select the most reliable interpretation. Additionally, each considered observation is geographically homogenized using a common Gazetteer, thus fixing potential georeferencing errors in the original data source. The georeferencing activity is particularly important for all publications made roughly prior to 2005, when free and easy-to-use Web mapping solutions such as Google Maps or Bing Maps were not available.

INGV release a DBMI version on a multiannual base, an updated snapshot of the collected intensity data aimed at providing input data to official catalog of earthquakes, CPTI. The first version of DBMI (“DOM”: Monachesi and Stucchi 1997) had a time-window 1000–1992, for a total number of 935 earthquakes and 30,119 MDPs. The second version (“DBMI04”: Stucchi et al. 2007) covers a time-window from 217 BC to 2002 AD, for a total of 1041 earthquakes and 58,146 MDPs. The latest version (“DBMI11”: Locati et al. 2011) span the time-window 1000 AD–2006 AD, for a total number of 1681 earthquakes and 86,071 MDPs. The plot of the maximum intensities of DBMI11 is shown in Fig. 2a, whereas the Fig. 2b shows the time-window 1972–2006.

Each release of DBMI can be accessed via its official website (<http://emidius.mi.ingv.it>), and it can be queried both by earthquake or locality. If the number of reported MDPs in a place is greater than two, DBMI allows the user to retrieve the so called “place seismic history”, the list of observed intensities reported at the place.

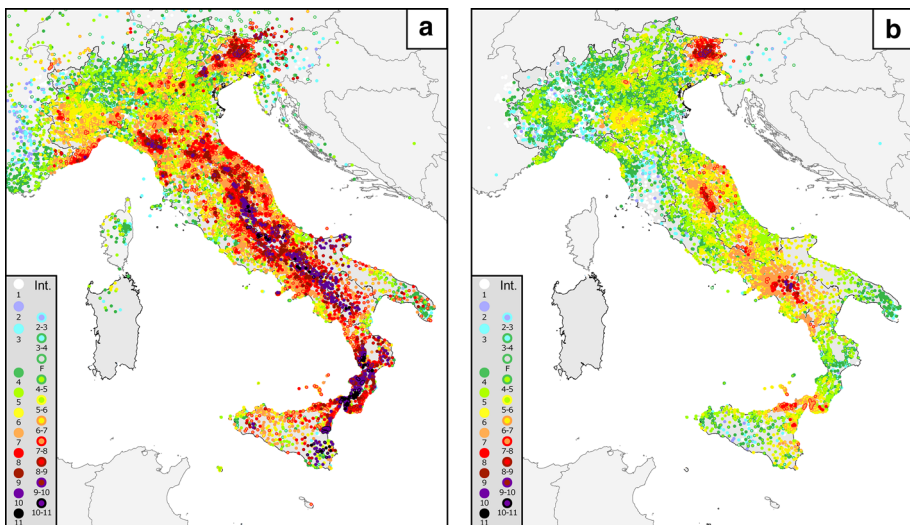


Fig. 2 Plot of the maximum observed intensities in DBMI11: **a** 1681 earthquakes, 86,071 MDPs distribute in 14,150 localities of the time-window 1000–2006; **b** 341 earthquakes, 41,933 MDPs distributed on 9446 localities of the time window 1972–2006

2.2 The parametric catalogue of the Italian earthquakes, CPTI

CPTI makes available parameters (epicentral location, magnitude and their uncertainties) related to earthquakes of interest for the Italian territory occurred since the year 1000 and documented in the scientific literature. CPTI is the national reference catalog, therefore it is used in a wide range of activities, such as seismic hazard assessment (MPS Working Group 2004), natural hazard emergency plans for Italian municipalities, public awareness teaching courses, and many others.

Covering such a long seismic history requires taking advantage of heterogeneous sources of information such as macroseismic as well as instrumentally recorded data, that CPTI blend together in a unique and comprehensive solution. Parameters related to historical earthquakes are based on macroseismic data only released by the DBMI, whereas for more recent earthquakes, macroseismic observations are integrated by instrumental data from a selection of instrumental earthquake catalogs released in Italy, and catalogs from the surrounding countries. Indeed, not all the known earthquakes are described by a number of MDPs, whereas many recent earthquakes have parametric data derived from instrumental recordings only.

CPTI is released on a multiannual base, in tune with a corresponding release of DBMI. The last version is CPTI11 (Rovida et al. 2011) which contains 3182 events (Fig. 3a), covering the time-window 1000–2006 AD, and has a reference threshold of $M_w \geq 4.5$ or an epicentral intensity ≥ 5 –6 MCS. CPTI11 reports 751 events in the time-window 1972 and 2006 (Fig. 3b). Around twenty instrumental earthquake catalogs were selected for compiling CPTI11, among which the most important in terms of contributed data are ISC Bulletin (ISC, International Seismological Centre), CSI 1.1 (Castello et al. 2006), CSTI 1.1 (CSTI Working Group 2005), Bollettino strumentale (Istituto Nazionale di Geofisica 1982–1996; INGV 1983–2008), and the PDE Bulletin (NEIC, National Earthquake Information Center). When both macroseismic and instrumental parameters are available, the two

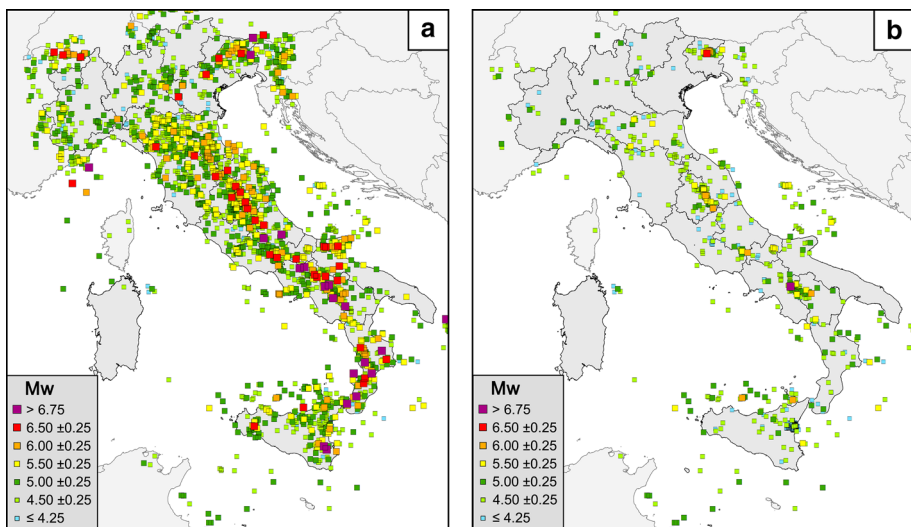


Fig. 3 Plot of the epicenters in CPTI11: **a** 3182 earthquakes of the entire time-window 1000–2006; **b** 751 earthquakes of the time window 1972–2006

determinations and a default one are provided (in this case, the epicenter is selected according to expert judgement, while M_w is obtained as a weighted mean). For some events with poor macroseismic data only, the earthquake is listed, but no macroseismic parameters have been determined.

2.3 The Italian accelerometric archive, ITACA

Italian accelerometric data are released by multiple institutions, according to different aim, standard, and formats. The difference in the data collecting procedure with respect to macroseismic observations, is that accelerometric data are already digitally structured, and mostly released through the Web, thus leading to an easier data retrieval procedure.

The Italian Strong Motion Database, ITACA (Luzi et al. 2008; Pacor et al. 2011), was developed in the framework of the agreements between the Italian Department of Civil Protection (Dipartimento della Protezione Civile, DPC) and the Istituto Nazionale di Geofisica e Vulcanologia (INGV), starting from 2005. The majority of strong-motion data have been recorded by the Italian Strong-motion Network (RAN), operated by the DPC, and by the National Seismic Network, operated by INGV. The version 2.0 of ITACA, released in January 2015, contains data from more than a dozen seismic networks, with about 7695 processed three-component waveforms generated by 377 $M > 4$ earthquakes (Fig. 4a) occurred in the period 1972–2015. ITACA reports 529 events in the time-window 1972 and 2006 (Fig. 4b). It is worth mentioning that ITACA reports many analog recordings in this time-window, as digital accelerometers started spreading in Italy only in the late '90s, and it took about 10 years to upgrade most of the RAN network. Since the transition to the digital era, the accuracy of the strong motion parameters increased dramatically, as limitations such as the late triggering, and the limited bandwidth were solved (Paolucci et al. 2011).

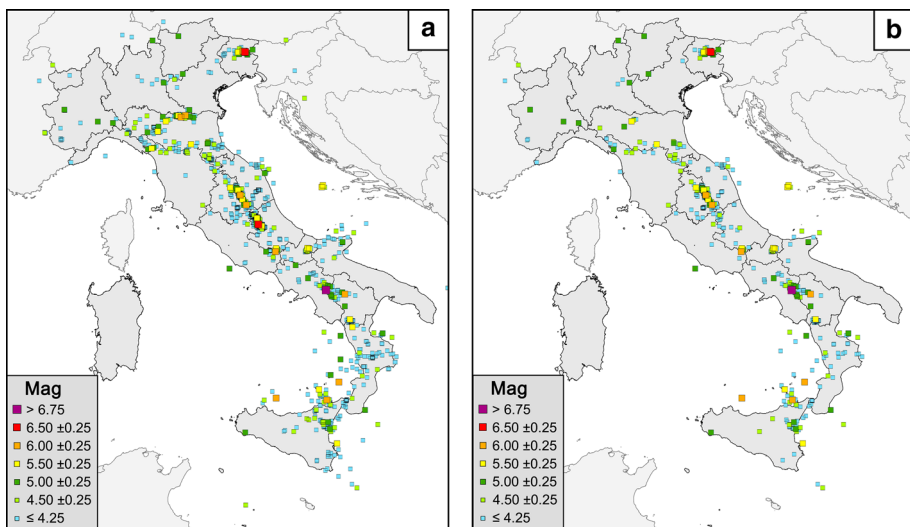


Fig. 4 Plot of the epicenters in ITACA 2.0: **a** 1214 earthquakes of the entire time-window 1972–2014; **b** 529 earthquakes of the time window 1972–2006

Since accelerometric records may contain instrumental or environmental noise in both time and frequency domains, data need to be processed before being utilized, in order to consider only the part of the recordings which represents the seismic signal. The use of non-processed waveform may include errors in the time-series or in the derived intensity measures (e.g. peak ground acceleration or velocity, Housner intensity, etc.). ITACA adopts a robust processing schema developed by Paolucci et al. (2011) which is applied to each waveform after visual inspection by an analyst.

ITACA reports recordings from a total number of 967 accelerometric stations (Fig. 5a), and for some of them it provides a site characterization in terms of metadata describing the location, housing, geological and geomorphological details, shear-wave velocity profiles and resonance frequencies obtained by the analysis of ambient noise, if any. This information may be useful to better understand the peculiarities of a waveform, and to establish a more appropriate link between localities with reported macroseismic intensities and accelerometric stations.

3 “Rosetta”: linking localities, stations, and events

DBMI11 reports 41,933 MDPs in the period of time shared with ITACA (1972–2006), covering 9446 localities (Fig. 2b) out of the 70,000 localities reported in the reference Gazetteer. The aim of Rosetta at the present development stage, is to investigate the possibility to establish a direct link between localities quoted in DBMI and the 77 selected stations in ITACA (Fig. 5b) operating since 1975 or, at least, for 25 years out of the whole 967 available stations (Fig. 5a) (Gomez Capera et al. 2015). These 77 stations were identified in the framework of the site-specific characterization activities of the project S2 of the 2014 agreement between DPC and INGV (Luzi et al. 2015; Felicetta et al. 2016).

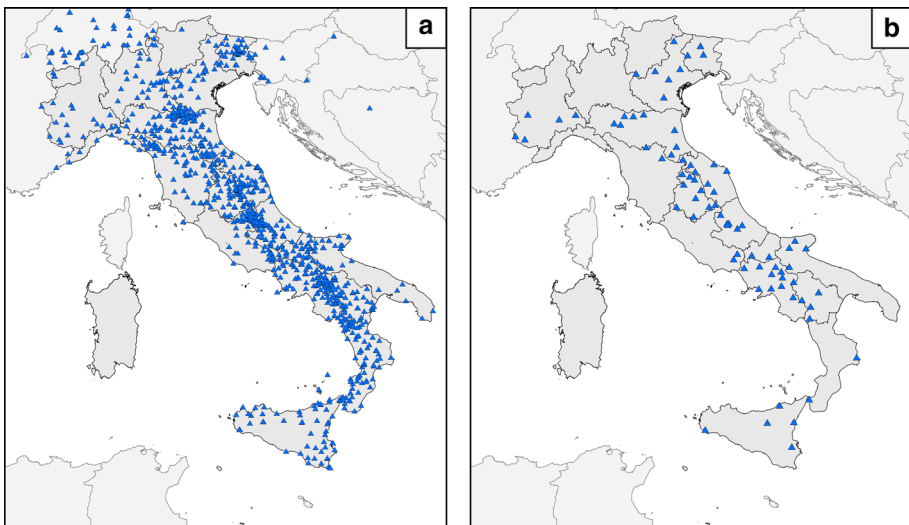


Fig. 5 Plot of the stations reported in ITACA 2.0: **a** all 967 stations; **b** the 77 stations operating since 1975 or, at least, for 25 years, selected in this study

Prior to establish links among DBMI, CPTI, and ITACA, we compared the respective database-schemas, and the most relevant identifiers:

- DBMI has identifiers for earthquakes, MDPs, and localities;
- CPTI has identifiers for earthquakes;
- ITACA has identifiers for earthquakes, networks, stations, locations, instruments, and streams.

While the current version of CPTI and ITACA let their identifiers public, DBMI does not publish its internal identifiers through the website, this might change in the future. At the time of developing Rosetta, all databases were accessed only from their respective websites, as no computer friendly interface or applications program interfaces (APIs) were available for dealing with automatically generated queries. The situation will change soon, as all involved Working Groups have decided to implement a web service following the standard proposed by the International Federation of Digital Seismograph Networks (FDSN, <http://www.fdsn.org/>), even if there are not easily solvable issues in these standards. For instance, the FDSN-event service adopts QuakeML v1.2 (Schorlemmer et al. 2004, 2011), an XML dialect describing event parameters, which does not support macroseismic data type, while the FDSN-dataselect is specific for continuous streams but not for event-related waveforms. Because of these issues, the development of web services is temporarily postponed, and consequently, a system able to automatically download, compare data using complex queries, and establish links autonomously is also postponed. As for the exercise presented in the present study, the linking between the coordinates of the localities and of the stations was manually performed in a geographic information system (GIS). A simple geographic approach was adopted as a more complex approach (e.g., by taking into account site specific conditions) would require an amount of work not planned for this exercise. As a result of the matching procedure, all stations has at least one locality within 3 km (Fig. 6a), but when taking into account those localities quoted in DBMI11 only, the maximum distance reaches 6 km (Fig. 6b). The resulting list of locality-station pairs is reported in the Online Appendix 1.

The association of earthquakes entries was performed between CPTI11 and ITACA, as earthquakes in DBMI11 are a subset of those reported in CPTI11. In the overlapping period 1972–2006, CPTI11 contains 751 earthquakes, while ITACA reports data for 529 earthquakes. Also in this case, the linking procedure was manually performed because of the current lack of web services, and considered the limited number of events. The common

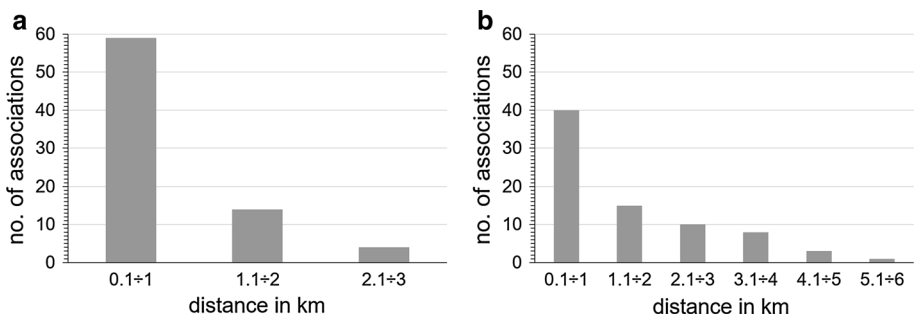


Fig. 6 Distance between stations and localities: **a** considering all existing localities; **b** considering those localities quoted in DBMI11 only

events are 265, that is 35 % of CPTI11 events, or 50 % of ITACA events. The list of the 265 common events is reported in Online Appendix 2.

The adopted solution for settling the resulting associated identifiers between localities and stations, and among earthquake entries, is to accommodate the corresponding external identifier in each database schema. By including these identifiers, the database maintainer has an accurate control on the linked elements, whatever linking procedure will be implemented.

During the implementation of Rosetta, the authors decided to develop a prototype website, and made it openly available (<http://emidius.mi.ingv.it/DPC/S2-2014>). Thanks to the extensive use of identifiers, all elements, stations, places, events, waveforms, and intensities, are directly linked to the relevant resource in their respective website. In addition to traditional HTML based tables, the Web interface of Rosetta allows the users to display the surroundings of each station using an interactive, 3D model of a DTM (Digital Terrain Model) covering a square area of 10×10 km. (Fig. 7). The technical implementation is based on a WebGL solution (Sandvi 2013). The DTM is derived from the TINITALY dataset (Tarquini et al. 2007, 2012), and can be rendered as flat shaded surface, or using satellite images publicly available (MATTM 2012).

4 Investigating the relationships between PGA and intensity

Empirical relationships between MCS intensity and PGA was achieved by coupling the MDP with the strong-motion stations existing in a radius of 7 km. The associated dataset resulted in 118 pairs of site Intensity-PGA (Fig. 8a; Online Appendices 3, 4) from 53 Italian earthquakes in the time-window 1976–2003. Even if not included in DBMI11, the 6 April 2009 Aquila earthquake was considered as both MDPs and Strong-Motion Recordings (SMRs) are available, respectively from Galli et al. (2009), and from Chiarabba et al. (2009). The Mw ranges from 3.9 to 6.9 (Fig. 8b), with a site intensity ranging between 3–4 and 8–9 MCS.

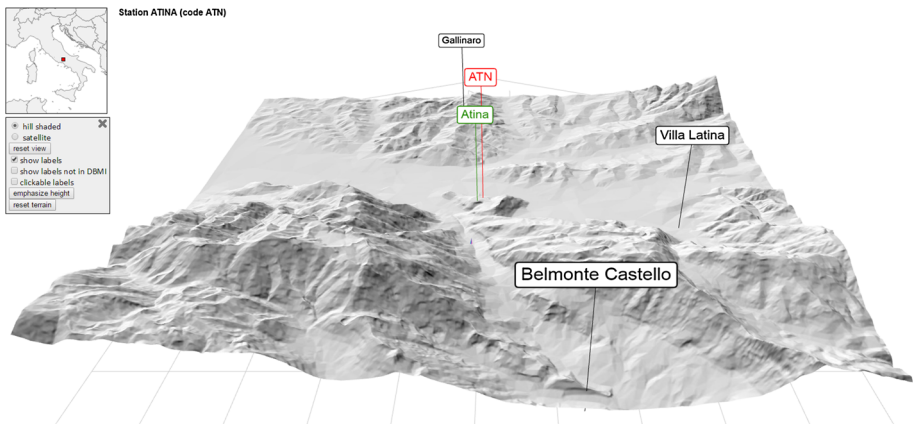


Fig. 7 Example of the Rosetta Web interface showing the surrounding area ($10 \text{ km} \times 10 \text{ km}$) of the “Atina” (ATN) station. The interactive scene is *centered* at the station (*red label*), the closest place (*green label*), and other places (*black labels*) from DBMI11 are represented also

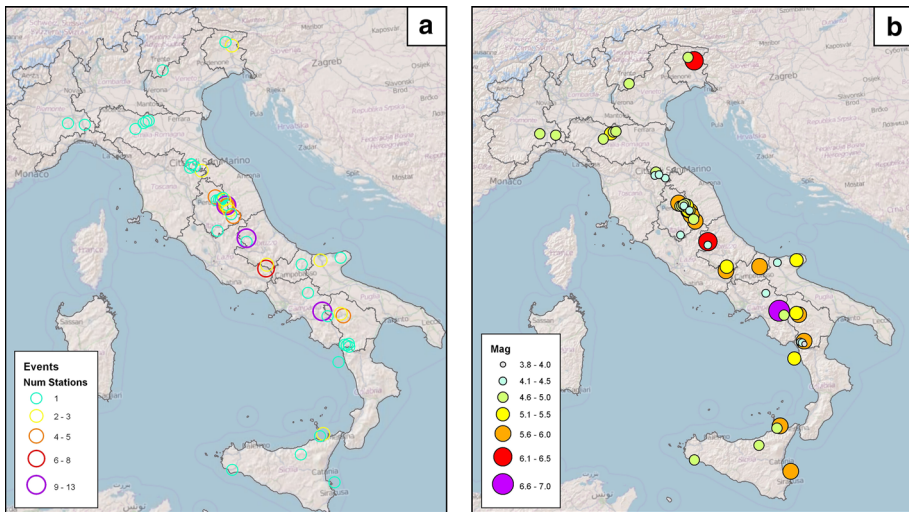


Fig. 8 Plot of the 53 earthquakes in the dataset of this study: **a** the *circle size* is proportional to the number of strong-motion stations that recorded the seismic event; as an example, the *purple circles* represent the 2009 Aquila earthquake (Mw 6.3) which is associated to 13 Intensity-PGA pairs, and the 1980 Irpinia-Basilicata earthquake (Mw 6.89), associated to 12 pairs; **b** the *circle size* is proportional to the magnitude

The methodology used is given by a simple predictive linear relationship between site intensity and logarithm PGA, as the only independent variable. To account for the uneven distribution of GMP corresponding to a single macroseismic intensity, a mean of PGA is assigned to each macroseismic intensity class from the 118 distributed macroseismic intensity-GMP pairs. The same approach was applied among others by Bilal and Askan (2014) for Turkey, and Tselentis and Danciu (2008) for Greece.

The correlation and regressions of macroseismic intensity versus mean of Log PGA is:

$$\text{Intensity} = -0.64 + 3.58 \text{LogPGA}(\text{cm/s}^2) \quad \text{with } \sigma = 0.69$$

The PGA range in the regression is $5.36 \leq \text{PGA} (\text{cm/s}^2) \leq 644.2$ (Fig. 9).

The regression proposed in the present study is compared to three alternative regressions:

- Faccioli and Cauzzi (2006) based on a dataset of 75 pairs, related to 26 earthquakes;
- Gomez Capera et al. (2007) based on a combined dataset by Faccioli and Cauzzi (2006), and the dataset by Margottini et al. (1992) that is based on 56 pairs, related to 26 earthquakes;
- Faenza and Michelini (2010) based on 141 pairs, related to 40 earthquakes.

The resulting comparison among the proposed regression and the three selected studies is shown in Fig. 10. The uncertainties expressed as standard deviation ($\pm\sigma$) to each regression are also shown. The proposed regression has a value of slope coefficient equal to Gomez Capera et al. (2007) regression. The regression proposed by Faenza and Michelini (2010) is closest to the proposed model, within the uncertainty (± 0.7) in the macroseismic intensity range $6 \leq I \leq 8$. It is observed that for $I < 6$ the Faenza and Michelini and Faccioli and Cauzzi regressions overestimate the intensity values by approximately one intensity degree. The $I \geq 7$ range values shown in Fig. 10 indicate that Faccioli and Cauzzi

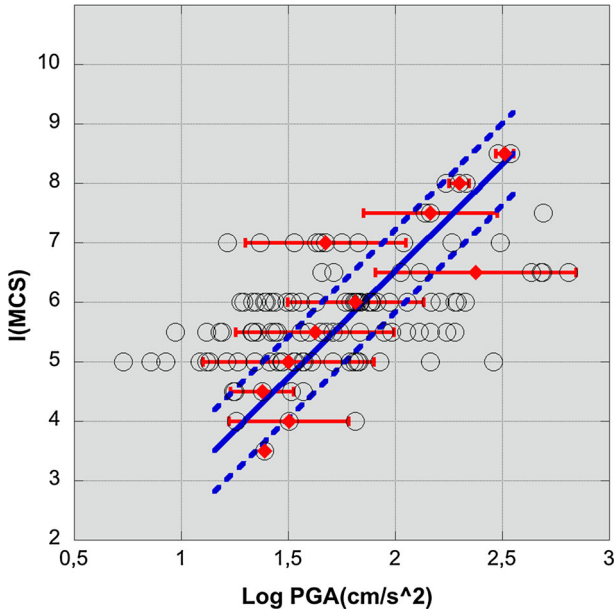


Fig. 9 Distribution of the mean and standard deviation *error bars* for Log(PGA) for the macroseismic intensity-PGA relationship obtained in this study. The *dashed lines* represent the σ

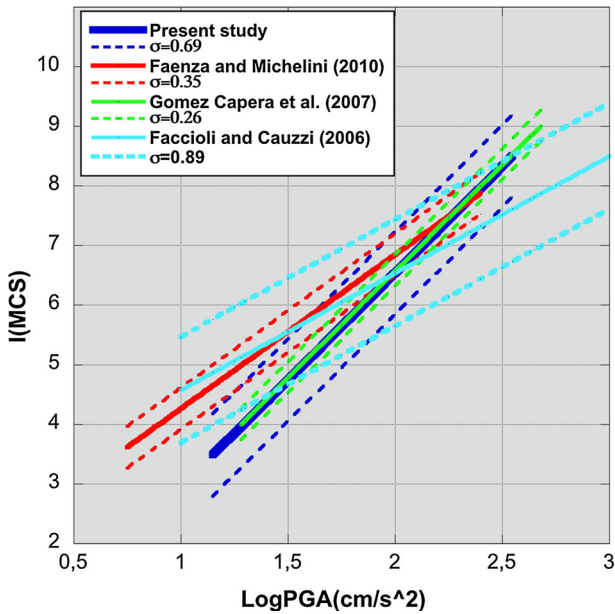


Fig. 10 Comparison of the macroseismic intensity-PGA relationship obtained in the present study with similar relations from previous studies in Italy

(2006) overestimates the PGA values. The comparison among these studies is difficult due to the different number of observations and earthquakes, and different regression techniques adopted by these studies to fit the data.

The Rosetta website helped and speedup in many aspects the performed analysis, but additional features could be implemented, such as making data downloadable, and allowing the user to customize the default associations between station and locality. Nevertheless, the use of ready-made associations between macroseismic and accelerometric data, greatly simplified the building of the dataset, and, once the upcoming release of ITACA and DBMI will be available, it will allow a newer, more reliable study on the relationship between PGA and intensity.

5 Conclusions

The Rosetta prototype website links macroseismic and accelerometric data in an integrated and user-friendly solution. A test phase aimed at investigating the relationships between intensity and accelerometric data was performed, and the ready-made intensity-accelerometric data pairs were particularly useful for avoiding the task of searching, downloading, re-formatting and establishing links among raw data. During the test, new features were suggested and implemented. New ideas for improving Rosetta were drafted, such as hints for emphasizing possibly missing macroseismic datasets or vice versa, and solutions for using FDSN based web services.

During the development of Rosetta, various methods were tested for linking data in DBMI, CPTI, and ITACA, each containing a different data type, and structured using a different logic. Rosetta demonstrated the usefulness of external identifiers for enabling the finest level of control over cross-database bridging solutions.

New releases of CPTI, DBMI, and ITACA will benefit from this experience also, as new links among these databases will be implemented directly in their Web user interface, together with new links to external online resources such as earthquake catalogues, scientific papers, or other type of supplementary datasets. In fact, an increasing amount of data related to site-specific conditions are being made available through station-books, or microzonation activities performed in Italy at regional level. These very detailed data, once combined with their associated web services, will allow an easier connection of the available scientific knowledge, greatly extending possible cross-disciplinary research activities.

Acknowledgments The authors acknowledge the support provided by the Italian Department of Civil Protection to the project INGV-DPC S2-2014 “Constraining Observations into Seismic Hazard”. This paper does not necessarily represent DPC official opinion and policies. We are grateful to the coordinators, Laura Peruzza, Francesca Pacor, and Agostino Goretti, for granting the opportunity to actively participate in the project, and Marco Massa for his useful advices. We thank Paolo Galli and an anonymous reviewer for their constructive comments that greatly improved the overall manuscript quality and readability.

References

- Allen TI, Wald DJ (2009) Evaluation of ground-motion modelling techniques for use in global ShakeMap: a critique of instrumental ground motion prediction equations, peak ground motion to macroseismic intensity conversions, and macroseismic intensity predictions in different tectonic settings. Open-File Report 2009-1047, U.S. Geological Survey, p 114
- Bilal M, Askan A (2014) Relationships between felt intensity and recorded ground-motion parameters for Turkey. Bull Seismol Soc Am 104(1):484–486. doi:[10.1785/0120130093](https://doi.org/10.1785/0120130093)

- Camassi R (2004) Catalogues of historical earthquakes in Italy. *Ann Geophys* 47(2–3):645–657. doi:10.4401/ag-3329
- Camassi R, Galli P, Tertulliani A, Castenetto S, Lucantoni A, Molin D, Naso G, Peronace E, Bernardini F, Castelli V, Cavaliere A, Ercolani E, Salimbeni S, Tripone D, Vannucci G, Arcoraci L, Berardi M, Castellano C, Del Mese S, Graziani L, Leschiutta I, Maramai A, Massucci A, Rossi A, Vecchi M, Azzaro R, D'Amico S, Ferrari F, Mostaccio N, Platania R, Scarfi L, Tuvé T, Zuccarello L, Carlino S, Marturano A, Albini P, Gomez Capera AA, Locati M, Meroni F, Pessina V, Piccarreda C, Rovida A, Stucchi M, Buffarini G, Paolini S, Verrubbi V, Mucciarelli M, Gallipoli MR, Barbano MS, Cecic I, Godec M (2009) Macro seismic investigation: methodology, earthquake parameters, unresolved issues. *Progettazione Sismica, Special Issue* 03:47–53. ISSN 1973-7462
- Caprio M, Tarigan B, Worden CB, Wiemer S, Wald DJ (2015) Ground motion to intensity conversion equations (GMICEs): a global relationship and evaluation of regional dependency. *Bull Seismol Soc Am* 105(3):1476–1490. doi:10.1785/012014286
- Castello B, Selvaggi G, Chiarabba C, Amato A (2006) CSI Catalogo della sismicità italiana 1981–2002, versione 1.1. INGV-CNT, Roma. <http://csi.rm.ingv.it/>. Accessed Dec 2015
- Cecic I, Musson RMW (2004) Macro seismic surveys in theory and practice. *Nat Hazards* 31:39–61. doi:10.1023/B:NHAZ.0000020255.00986.37
- Chiarabba C, Amato A, Anselmi M, Baccheschi P, Bianchi I, Cattaneo M, Cecere G, Chiaraluca L, Ciaccio GM, De Gori P, De Luca G, Di Bona M, Di Stefano R, Faenza L, Govoni A, Improta L, Lucente FP, Marchetti A, Margheriti L, Mele F, Michelini A, Monachesi G, Moretti M, Pastori M, Piana Agostinetti N, Piccinini D, Roselli P, Seccia D, Valoroso L (2009) The 2009 L'Aquila (Central Italy) Mw 6.3 earthquake: main shock and aftershocks. *Geophys Res Lett*. doi:10.1029/2009GL039627
- CSTI Working Group (2005) Catalogo Strumentale dei Terremoti Italiani dal 1981 al 1996 (Versione 1.1). http://gaspdy.df.unibo.it/paolo/gndt/Versione1_1/Leggimi.htm. Accessed Dec 2015
- Cua G, Wald DJ, Allen TI, Garcia D, Worden CB, Gerstenberger M, Lin K, Marano K (2010) “Best Practices” for using macro seismic intensity and ground-motion-intensity conversion equations for hazard and loss models in GEM1, GEM technical report 2010-4, GEM Foundation, Pavia, Italy
- De Rubeis V, Gasparini C, Tosi P (1992) Determination of the macro seismic field by means of trend and multivariate analysis of questionnaire data. *Bull Seismol Soc Am* 82(3):1206–1222
- Faccioli E, Cauzzi C (2006) Macro seismic intensities for seismic scenarios estimated from instrumentally based correlations. In: Proceedings of the first European conference on earthquake engineering and seismology, Geneva, Switzerland, 3–8 September, paper no. 569
- Faenza L, Michelini A (2010) Regression analysis of MCS intensity and ground motion parameters in Italy and its application in ShakeMap. *Geophys J Int* 180:1138–1152. doi:10.1111/j.1365-246X.2009.04467.x
- Faenza L, Michelini A (2011) Regression analysis of MCS intensity and ground motion spectral accelerations (SAs) in Italy. *Geophys J Int* 186:1415–1430
- Fäh D, Giardini D, Kästli P, Deichmann N, Gisler M, Schwarz-Zanetti G, Álvarez-Rubio S, Sellami S, Edwards B, Allmann B, Bethmann F, Wössner J, Gassner-Stamm G, Fritsche S, Eberhard D (2011) ECOS-09 earthquake catalogue of Switzerland release 2011 report and database. Swiss Seismological Service ETH Zurich, Report SED/RISK/R/001/20110417, pp 42+ Appendices. <http://hiteddb.ethz.ch:8080/ecos09>. Accessed Dec 2015
- Felicetta C, D'Amico M, Lanzano G, Puglia R, Russo E, Luzi L (2016) Site characterization of Italian accelerometric stations. *Bull Earthq Eng*, accepted to BEE special issue project S2-2014
- Galli P, Camassi R, Azzaro R, Bernardini F, Castenetto S, Molin D, Peronace E, Rossi A, Vecchi M, Tertulliani A (2009) Il terremoto aquilano del 6 aprile 2009: rilievo macrosismico, effetti di superficie ed implicazioni sismotettoniche. *Il Quat Italian J Quat Sci* 22(2):235–246 (in Italian)
- Gasparini C, De Rubeis V, Tertulliani A (1992) A method for the analysis of macro seismic questionnaires. *Nat Hazards* 5(2):169–177. doi:10.1007/BF00127004
- Gomez Capera AA, Albarello D, Gasperini P (2007) Aggiornamento relazioni fra l'intensità macrosismica e PGA. Technical report, DPC-INGV Project S1, Task 2, Deliverable D11, Istituto Nazionale di Geofisica e Vulcanologia, Sezione di Milano-Pavia, <http://esse1.mi.ingv.it/d11.html>. Accessed Dec 2015 (in Italian)
- Gomez Capera AA, Locati M, Fiorini E, Bazzurro P, Luzi L, Massa M, Puglia R, Santulin M (2015) D3.1 Macro seismic and ground motion: site-specific conversion rules. DPC-INGV-S2 Project-2015, Deliverable 3.1, <https://sites.google.com/site/ingvdpc2014projetto2/deliverables/>. Accessed Dec 2015
- Grünthal G (ed) (1998) European Macro seismic Scale 1998 (EMS-98). *Cahiers du Centre Européen de Géodynamique et de Séismologie* 15, Centre Européen de Géodynamique et de Séismologie, Luxembourg. ISBN:2-87977-008-4

- Guidoboni E, Stucchi M (1993) The contribution of historical records of earthquakes to the evaluation of seismic hazard. *Ann Geophys* 36(3–4):201–215. doi:10.4401/ag-4264
- International Seismological Centre (ISC) On-line bulletin, <http://www.isc.ac.uk>, Internatl. Seis. Cent., Thatcham. <http://www.isc.ac.uk/iscbulletin/>. Accessed Dec 2015
- Istituto Nazionale di Geofisica (ING) (1982–1996) Bollettino Macrosismico, Istituto Nazionale di Geofisica, Roma
- Istituto Nazionale di Geofisica e Vulcanologia (INGV) (1983–2008) Bollettino Sismico Strumentale, Istituto Nazionale di Geofisica e Vulcanologia, Roma. <http://legacy.ingv.it/roma/reti/rms/bollettino/>. Accessed Dec 2015
- Locati M, Camassi R, Stucchi M (eds) (2011) DBMI11, the 2011 version of the Italian Macroseismic Database. Istituto Nazionale di Geofisica e Vulcanologia, Milano, Bologna. doi:10.6092/INGV.IT-DBMI11
- Luzi L, Felicetta C, Puglia R, Russo E, Pacor F, D'Amico M, Lanzano G, Task2 Working Group (Albarelo D, Barani S, Barnaba C, Castellaro S, Gallipoli M, Laurenzano G, Massa M, Moscatelli M) (2015) D2.1—site-specific characterization of selected ITACA stations. DPC-INGV-S2 Project-2015, Deliverable 2.1. <https://sites.google.com/site/ingvdpc2014progettos2/deliverables/>. Accessed Dec 2015
- Luzi L, Hailemichael S, Bindi D, Pacor F, Mele F, Sabetta F (2008) ITACA (ITalian ACcelerometric Archive): a web portal for the dissemination of Italian strong-motion data. *Seismol Res Lett* 79(5):716–722. doi:10.1785/gssrl.79.5.716
- Margottini C, Molin D, Serva L (1992) Intensity versus ground motion: a new approach using Italian data. *Eng Geol* 33(1):45–58. doi:10.1016/0013-7952(92)90034-V
- Medvedev S, Sponheuer W, Karník V (1964) Neue seismische Skala Intensity scale of earthquakes, 7. Tagung der Europäischen Seismologischen Kommission vom 24.9. bis 30.9.1962. In: Jena, Veröff. Institut für Bodendynamik und Erdbebenforschung in Jena, Deutsche Akademie der Wissenschaften zu Berlin, vol 77, pp 69–76 (in German)
- Ministero dell' Ambiente e della Tutela del Territorio e del Mare (MATTM) (2012) Ortofoto a colori, anno 2012. Geoportale Nazionale. <http://www.pcn.minambiente.it/GN/en/>. Accessed Dec 2015
- Molin D (2003) Considerazioni sull'eventuale adozione in Italia della scala macrosismica europea (EMS-1998). In: *Atti del 22° convegno nazionale GNGTS*. ISBN/ISSN:88-900385-9-4 (in Italian)
- Molin D, Peronace E, Castenetto S, Galli P (2010) Terremoto aquilano del 6 Aprile 2009: rilievo dei danni a Sant'Eusanio Forconese e stima dell'intensità macrosismica secondo la scala EMS-98. Proceedings, 29° Convegno Nazionale GNGTS, Prato (Italy), 26–28 Oct 2010, pp 77–79 (in Italian)
- Monachesi G, Stucchi M (1997) DOM4.1, un database di osservazioni macrosismiche di terremoti di area italiana al di sopra della soglia del danno. Internal report, Gruppo Nazionale per la Difesa dai Terremoti (GNdT), Milano-Macerata. <http://emidius.mi.ingv.it/DOM/>. Accessed Dec 2015 (in Italian)
- MPS Working Group (2004) Redazione della mappa di pericolosità sismica prevista dall'Ordinanza PCM del 20 marzo 2003 n.3274 All. 1. Rapporto conclusivo per il Dipartimento della Protezione Civile. Istituto Nazionale di Geofisica e Vulcanologia, Milano-Roma. <http://zonesismiche.mi.ingv.it/>. Accessed Dec 2015 (in Italian)
- Musson RMW, Cčić I (2012) Intensity and intensity scales. In: Bormann P (ed) *New manual of seismological observatory practice 2 (NMSOP-2)*, Potsdam, Deutsches GeoForschungsZentrum GFZ, pp 1–41. doi:10.2312/GFZ.NMSOP-2_ch12
- Musson RMW, Grünthal G, Stucchi M (2009) The comparison of macroseismic intensity scales. *J Seismol* 14(2):413–428. doi:10.1007/s10950-009-9172-0
- National Earthquake Information Center (NEIC) PDE bulletin, preliminary determinations of epicenters, monthly listing. <http://earthquake.usgs.gov/data/pde.php>. Accessed Dec 2015
- Pacor F, Paolucci R, Luzi L, Sabetta F, Spinelli A, Gorini A, Nicoletti M, Marcucci S, Filippi L, Dolce M (2011) Overview of the Italian strong motion database ITACA 1.0. *Bull Earthq Eng* 9(6):1723–1739. doi:10.1007/s10518-010-9240-4
- Paolucci R, Pacor F, Puglia R, Ameri G, Cauzzi C, Massa M (2011) Record processing in ITACA, the new Italian strong-motion database. In: Akkar S, Gülkan P, Van Eck T (eds) *Earthquake data in engineering seismology: predictive models, data management, and networks*. Springer, The Netherlands, pp 99–113. doi:10.1007/978-94-007-0152-6
- Rovida A, Camassi R, Gasperini P, Stucchi M (eds) (2011) CPTI11, the 2011 version of the Parametric Catalogue of Italian Earthquakes. Istituto Nazionale di Geofisica e Vulcanologia, Milano, Bologna. doi:10.6092/INGV.IT-CPTI11
- Sandvi B (2013) Converting terrain data to a WebGL-friendly format, Terrain building with three.js. Blog. <http://thematicmapping.org/>. Accessed Dec 2015

- Schorlemmer D, Wyss A, Maraini S, Wiemer S, Baer M (2004) QuakeML—an XML schema for seismology. ORFEUS Newslett. <http://www.orfeus-eu.org/organization/Organization/Newsletter/vol6no2/quakeml.shtml>. Accessed Dec 2015
- Schorlemmer D, Euchner F, Kästli P, Saul J (2011) QuakeML: status of the XML-based seismological data exchange format. *Ann Geophys* 54(1):59–65. doi:[10.4401/ag-4874](https://doi.org/10.4401/ag-4874)
- Scotti O, Baumont D, Quenet G, Levret A (2004) The French macroseismic database SISFRANCE: objectives, results and perspectives. *Ann Geophys* 47(2–3):571–581. doi:[10.4401/ag-3323](https://doi.org/10.4401/ag-3323)
- Sieberg A (1930) Geologie der Erdbeben. *Handbuch der Geophysik* 2(4):552–555 **(in German)**
- Stucchi M, Albini A (1991) New developments in macroseismic investigation. In: *Proceedings of the international workshop on seismology and earthquake engineering*, Mexico City, pp 47–70
- Stucchi M, Camassi R, Rovida A, Locati M, Ercolani E, Meletti C, Migliavacca P, Bernardini F, Azzaro R (2007) DBMI04, il database delle osservazioni macrosismiche dei terremoti italiani utilizzate per la compilazione del catalogo parametrico CPTI04. *Quaderni di Geofisica*, vol 49 **(in Italian)**
- Tarquini S, Isola I, Favalli M, Mazzarini F, Bisson M, Pareschi MT, Boschi E (2007) TINITALY/01: a new triangular irregular network of Italy. *Ann Geophys* 50(3):407–425. doi:[10.4401/ag-4424](https://doi.org/10.4401/ag-4424)
- Tarquini S, Vinci S, Favalli M, Doumaz F, Fornaciai A, Nannipieri L (2012) Release of a 10-m-resolution DEM for the Italian territory: comparison with global-coverage DEMs and anaglyph-mode exploration via the web. *Comput Geosci* 38:168–170. doi:[10.1016/j.cageo.2011.04.018](https://doi.org/10.1016/j.cageo.2011.04.018)
- Tertulliani A, Galli P (2012) Scale macrosismiche a confronto. Il caso del rilievo dei terremoti del maggio 2012 (ML 5.9, 5.8 E 5.3) nella pianura padano-emiliana. In: *Atti del 31° convegno nazionale GNGTS*. ISBN/ISSN:88-900385-9-4 **(in Italian)**
- Tselentis G, Danciu L (2008) Empirical relationships between modified Mercalli intensity and engineering ground-motion parameters in Greece. *Bull Seismol Soc Am* 98(4):1863–1875. doi:[10.1785/0120070172](https://doi.org/10.1785/0120070172)